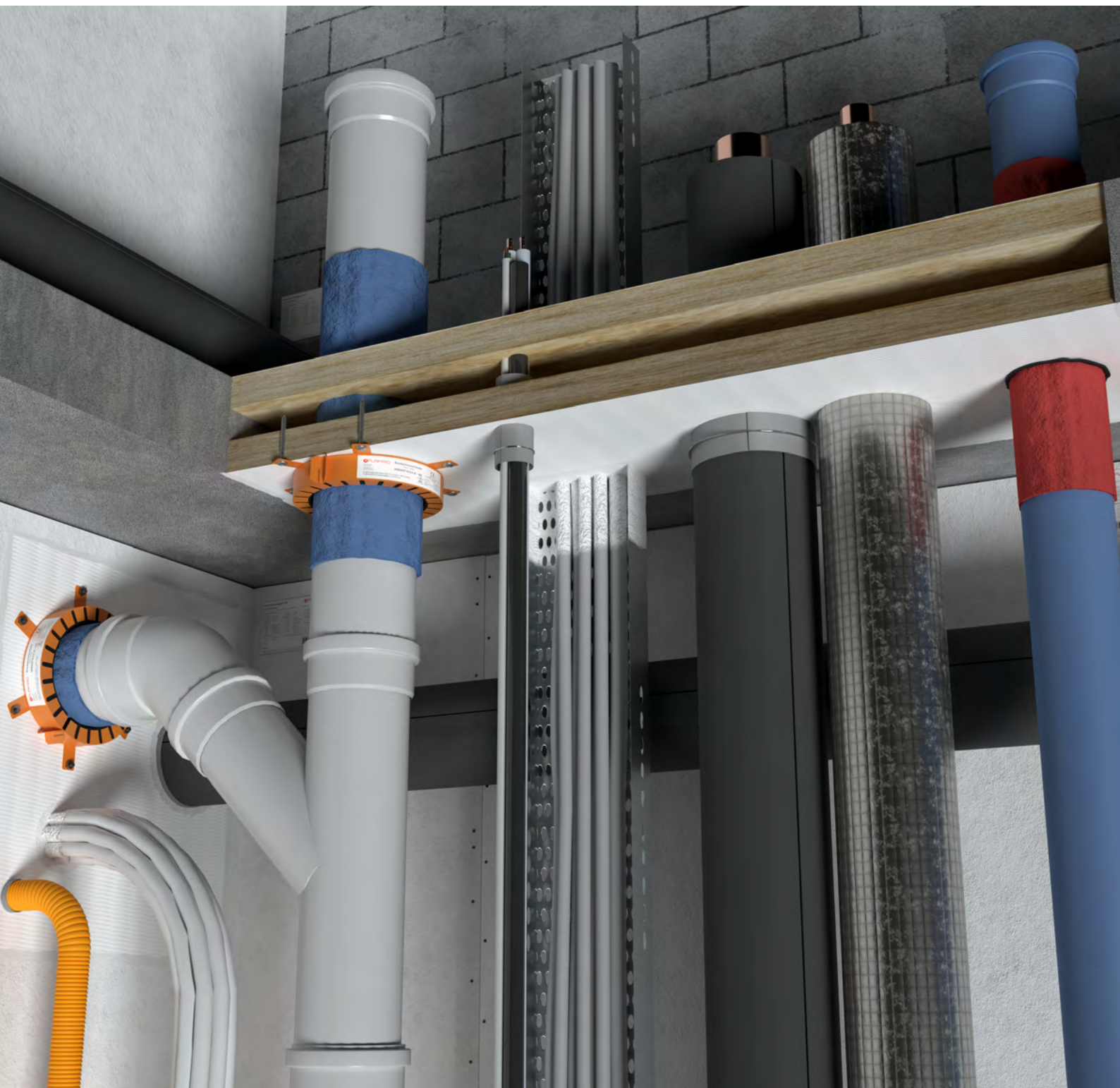


DG-SC Graphite filler

Penetration sealing with DG-SC Graphite filler



DG-SC graphite filler allowed services

Service	Dimensions	Protective measure	Fire resistance class
Cables			
Cables	$\varnothing \leq 21$ mm	10-25 x 25 mm, without stonewool backing 10-50 x 25 mm, stonewool backing, on both sides	EI = 120
	$\varnothing \leq 50$ mm		EI = 60
Cable E-YCWY 4x95RM	$\varnothing \leq 47$ mm		EI = 90
Cable HO7RN-F 4G95	$\varnothing \leq 61$ mm		EI = 90
Cable bundles	$\varnothing \leq 100/21$ mm	10-25 x 25 mm, without stonewool backing 25-50 x 25 mm, stonewool backing, on both sides	EI = 120
	$\varnothing \leq 150/21$ mm		EI = 120
	$\varnothing \leq 180/21$ mm	25-50 x 25 mm, stonewool backing, on both sides	EI = 90
Coaxial cable			
RADIAFLEX® RLK RFS	$\varnothing \leq 48.2$ mm	10-25 x 25 mm, without stonewool backing 10-50 x 25 mm, stonewool backing, on both sides	EI = 120 U/C
CELLFLEX® LCF RFS	$\varnothing \leq 50.3$ mm		EI = 120 U/C
HELIAX CommScope	$\varnothing \leq 51.1$ mm		EI = 120 U/C
Electrical Installation conduits (EIC's)			
Plastic EICs (Single)	$\varnothing \leq 32$ mm with/without cables $\varnothing \leq 21$ mm	10-25 x 25 mm, without stonewool backing 10-50 x 25 mm, stonewool backing, on both sides	EI = 120
Plastic EICs (Bundle)	$\varnothing \leq 90$ mm, consisting of individual EICs	10-25 x 25 mm, without stonewool backing 25-50 x 25 mm, stonewool backing, on both sides	EI = 120
Plastic EICs (Bundle)	$\varnothing \leq 100$ mm, consisting of individual EICs		EI = 60

Service	Dimensions	Pipe thickness	Protective measure	Fire resistance class
Non-combustable pipes (without insulation)				
Copper, steel, stainless steel, cast iron	$\varnothing \leq 15$ mm	1.0 mm	10-25 x 25 mm, without stonewool backing 10-50 x 25 mm, stonewool backing, on both sides	EI = 120 U/C
	$\varnothing \leq 18$ mm	1.0 mm		EI = 90 U/C
	$\varnothing \leq 22$ mm	1.0 mm		EI = 60 U/C
Steel, stainless steel, cast iron	$\varnothing \leq 42.4$ mm	2.1-14.2 mm	10-25 x 25 mm, without stonewool backing 10-50 x 25 mm, stonewool backing, on both sides	EI = 120 U/C
	$\varnothing \leq 48.3$ mm	2.1-14.2 mm		EI = 120 U/C
Non-combustable pipes with Mineral Wool insulation (with coating)				
Copper, steel, stainless steel, cast iron	$\varnothing \leq 88.9$ mm	2.1-14.2 mm	10-25 x 25 mm, without stonewool backing 10-50 x 25 mm, stonewool backing, on both sides	EI = 120
Steel, stainless steel, cast iron	$\varnothing \leq 114.3$ mm	2.1-14.2 mm		EI = 120
Non-combustable pipes with Flexible Elastomeric Foam (FEF) insulation				
Copper, steel, stainless steel, cast iron	$\varnothing \leq 54$ mm	2.1-14.2 mm	10-25 x 25 mm, without stonewool backing 25-50 x 25 mm, stonewool backing, on both sides	EI = 60 U/C
Steel, stainless steel, cast iron	$\varnothing \leq 114.3$ mm	2.1-14.2 mm		EI = 60 U/C
	$\varnothing \leq 168.3$ mm	2.1-14.2 mm	25-50 x 25 mm, stonewool backing, on both sides	EI = 60 U/C

DG-SC graphite filler allowed services

Service	Dimensions	Pipe thickness	Protective measure	Fire resistance class
Combustable pipes with/without PE acoustic insulation tube				
Standard pipes PVC-U, PVC-C, PE-HD, ABS, SAN+PVC PP-H	$\varnothing \leq 50$ mm	1.8-10 mm	10-25 x 25 mm, without stonewool backing 10-50 x 25 mm, stonewool backing, on both sides	EI = 75 U/C
Special Pipes Fratec Friaphone/Pipelife Master 3/ Poloplast POLO-KAL 3S/ Poloplast POLO-KAL NG/Poloplast POLO-KAL XS/Geberit Silent Pro/ Geberit Silent PP/Geberit Silent db20/Rehau Raupiano Plus/Conel Drain/Ostendorf Skolan Safe/Silentia Premium/Valsir Triplus/Wavin AS+/ Wavin Sitech +	$\varnothing \leq 75$ mm	1.8-10 mm		EI = 90 U/C
	$\varnothing \leq 110$ mm	1.8-10 mm	10-25 x 25 mm, without stonewool backing 25-50 x 25 mm, stonewool backing, on both sides	EI = 60 U/C
Combustable pipes with Flexible Elastomeric Foam (FEF) insulation (B-s3, d0)				
Standard pipes PVC-U, PVC-C, PE-HD, ABS, SAN+PVC PP-H	$\varnothing \leq 32$ mm	2.25 mm	25-50 x 25 mm, stonewool backing, on both sides	EI = 60 U/C
Multilayer pipes without insulation				
Multilayer Pipes, Frankische Alpex F 50, Alpex L, Uponor Unipipe Plus, Geberit Mepla, Kekelit Kelox KM 110, Rehau Rautitan Stabil	$\varnothing \leq 16-50$ mm	2.25-6 mm	10-25 x 25 mm, without stonewool backing 10-50 x 25 mm, stonewool backing, on both sides	EI = 90 U/C
	$\varnothing \leq 75$ mm	2.25-6 mm	10-25 x 25 mm, without stonewool backing 25-50 x 25 mm, stonewool backing, on both sides	EI = 90 U/C
Multilayer pipes with Flexible Elastomeric Foam (FEF) insulation (B-s3, d0)				
Multilayer Pipes, Alpex, Unipor, Geberit Mepla, KE KELIT KELOX, Henco	$\varnothing \leq 70$ mm	4.6 mm	25-50 x 25 mm, stonewool backing, on both sides	EI = 60 U/C