

System Flammotect 2 × 60 mm

Mixed penetration sealing system made of mineral fibre boards (2 × 60 mm) with ablative fire protection coating



Fire Resistance Class

EI 90 (max. EI 120) in accordance with EN 13501-2

Areas of Application

- Plasterboard wall, solid wall, solid floor, sandwich panel wall, timber construction (CLT walls and floors)

Services

		max. Ø
	Cables	≤ 80
	Cable bundles	≤ 100 / ≤ 21
	Cable trays	✓
	Single conduits	≤ 16
	Wave guides and coaxial cables	≤ 51.1
	single	≤ 63
	bundled	≤ 100 / ≤ 32
	single	≤ 32
	speedpipes	≤ 50, single Ø ≤ 14
	Non-combustible pipes with insulation made of mineral wool	≤ 323.9 (steel) ≤ 108.0 (copper)
	Non-combustible pipes with FEF insulation	≤ 219.1 (steel) ≤ 108.0 (copper)
	Non-combustible pipes with PIR insulation	≤ 219.1 (steel) ≤ 108.0 (copper)
	Combustible pipes	≤ 160
	Multilayer pipes	≤ 75
	HVAC split line combinations	✓
	Double solar pipes NanoSun ²	DN 40

*All specifications in mm

Please contact us for further information:

T +49 6746 9410-0 **E** bestellungen@flamro.de

W flamro.de

System Flammotect 2 x 60 mm

System Data

Certificates of usability		ETA-22/0052, KB 321100704-A Rev. 2.
Thickness of structural element	Plasterboard wall	≥ 100
	Solid wall	≥ 100
	Solid floor	≥ 150
	Timber wall	≥ 100
	Timber floor	≥ 140
	Sandwich panel wall	≥ 100
Sealing thickness	Plasterboard wall	≥ 120
	Solid wall	≥ 120
	Solid floor	≥ 150
	Timber wall	≥ 100
	Timber floor	≥ 150
	Sandwich panel wall	≥ 120

Maximum sealing size	Plasterboard wall and solid wall	1400 × 2000 / 2000 × 1400, without cladded aperture edge: 600 × 800 / 800 × 600
	Solid floor	1400 × 2000 / 910 × 8700
	Timber wall	600 × 1000 / 1000 × 600
	Timber floor	600 × 1000 / 420 × 3500
	Sandwich panel wall	1000 × 1000

All specifications in mm

Products



FLAMMOTECT-A
Coating

12.5 kg pail – Art. no. 01155131



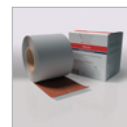
FLAMMOTECT-A
Filler

12.5 kg pail – Art. no. 01155134
310 ml cartridge – Art. no. 01155115



FLAMMOTECT-A
Solid emulsion

12.5 kg pail – Art. no. 01155136



NBR-plus
Fire protection wrap

Roll, 10 m × 125 mm
(separable into 2 × 62.5 mm)
– Art. no. 01261941



AWM II fire protection collar
Ø 32 mm – Ø 160 mm

Dimensions [mm]	Inner Ø collar [mm]	Outer Ø collar [mm]	Overall height [mm]	Number of tabs [n]	Art. no.
32	36–40	50–54	26.0	2	01142032
40	44–48	58–62	26.0	2	01142040
50	54–57	68–71	26.0	2	01142050
63	67–70	94–97	26.0	4	01142063
75	79–83	106–110	26.0	4	01142075
90	94–100	132–138	26.6	4	01142090
110	114–120	155–161	26.6	4	01142110
125	129–135	172–178	40.0	4	01142125
140	144–152	200–206	40.0	6	01142140
160	164–169	220–225	40.0	6	01142160

System Flammotect 2 x 60 mm

Products



KSL-W
Fire protection wrap

Roll, 10 m × 50 mm self-adhesive
– Art. no. 15510
Roll, 20 m × 50 mm self-adhesive
– Art. no. 15520
Roll, 10 m × 100 mm self-adhesive
– Art. no. 15530



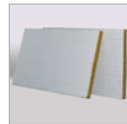
Mineral wool A1

Reaction to fire class in acc. with
EN 13501-1: A1
Melting point ≥ 1000 °C
10 kg bag – Art. no. 01183000



Mineral fibre board
in acc. with EN 13162

Criteria: density ≥ 150 kg/m³
Reaction to fire class A1 in acc. with
EN 13501:1
Melting point ≥ 1000 °C.
(TR10) tensile strength vertical to board
surface ≥ 10 kPa according to EN 1607
Thickness ≥ 60 mm



Mineral fibre boards

pre-coated on one side with
FLAMMOTECT-A
Dimensions 1000 × 600 × 60 mm
Box with 4 pcs. – Art. no. 01182165

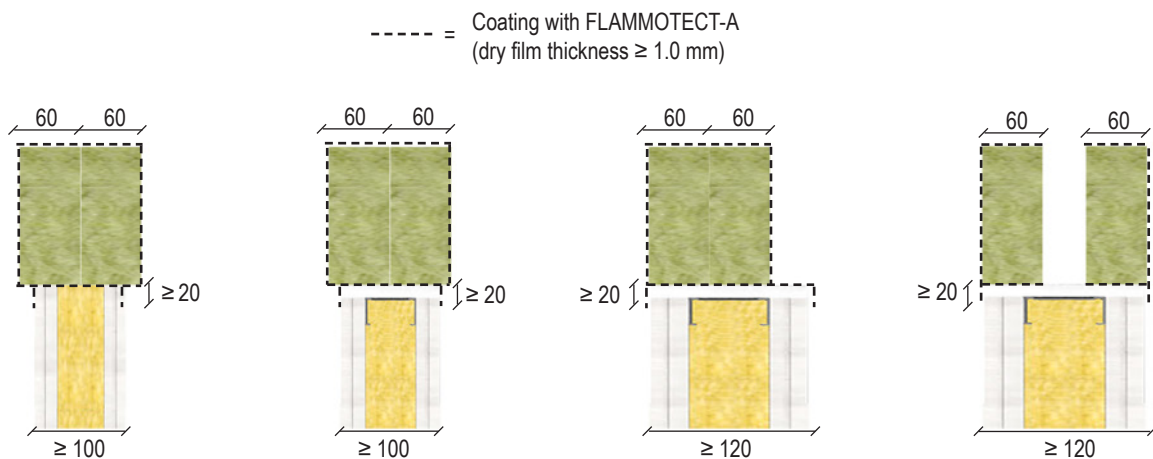


Label

1 piece – Art. no. 14003

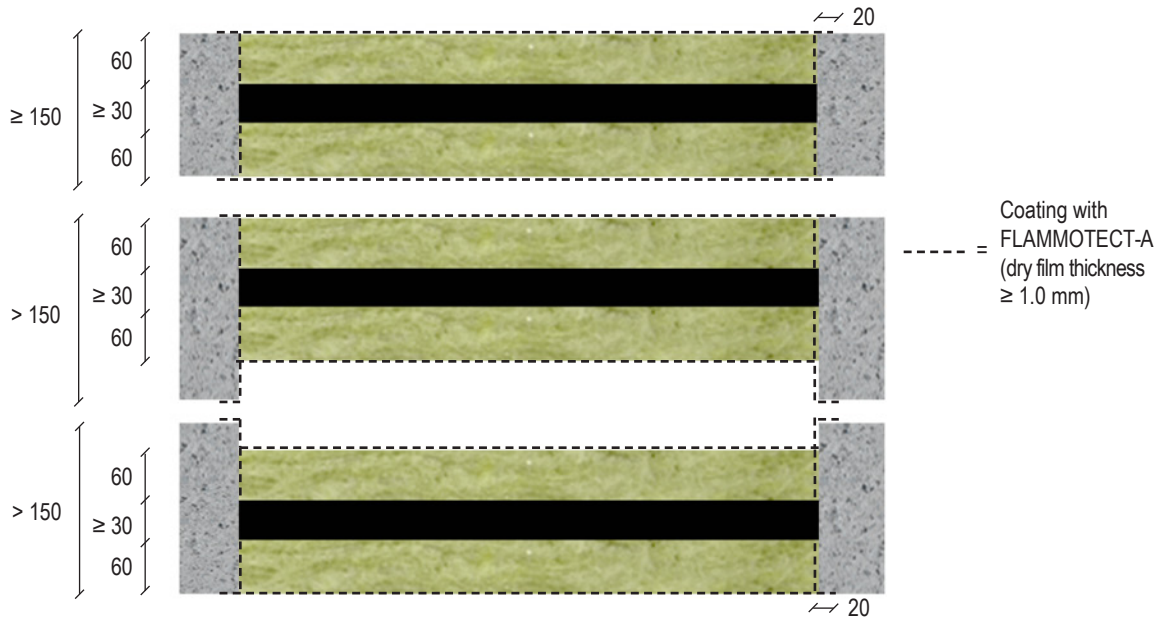
Design Variants

Plasterboard wall and solid wall

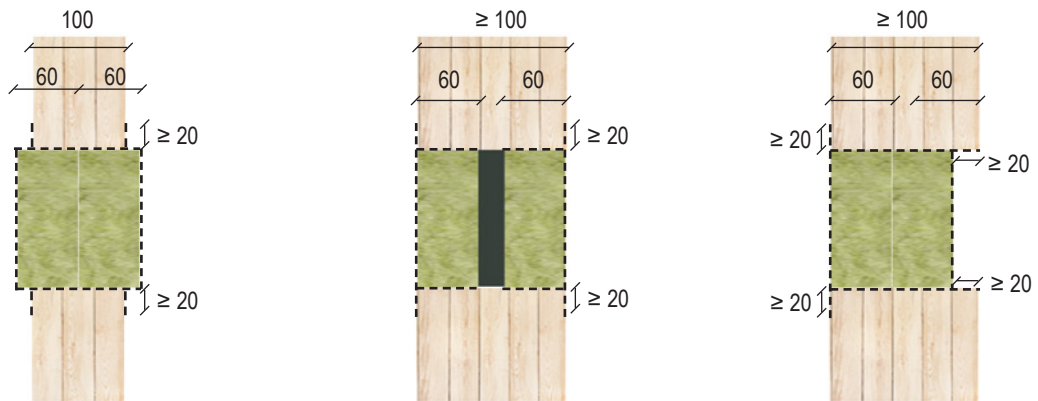


System Flammotect 2 × 60 mm

Solid floor



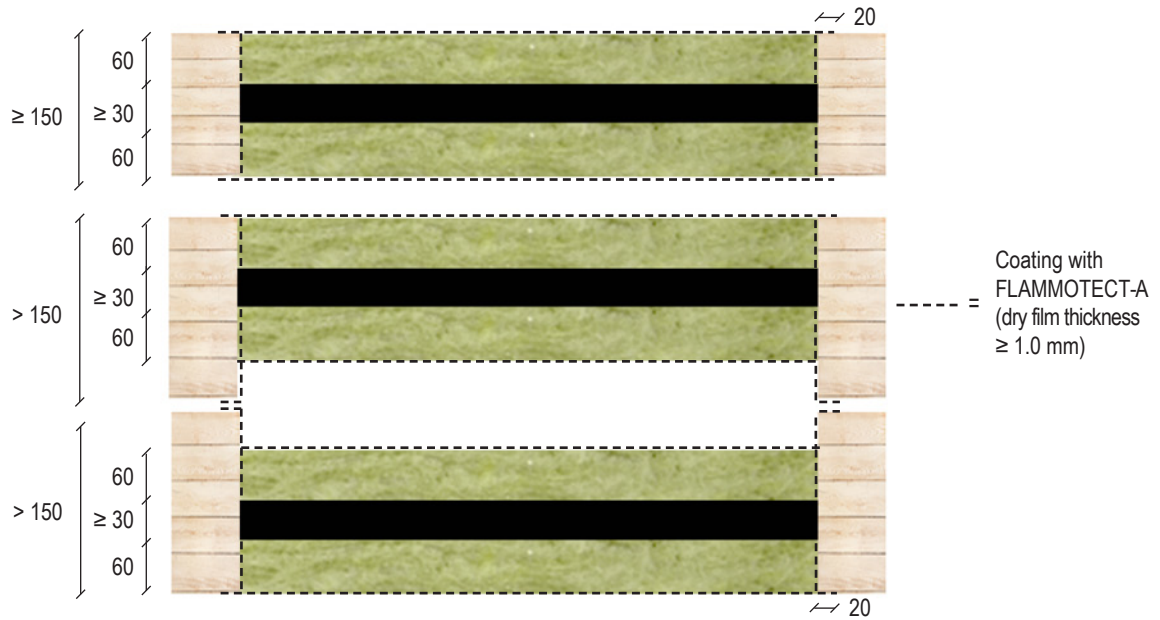
Timber wall



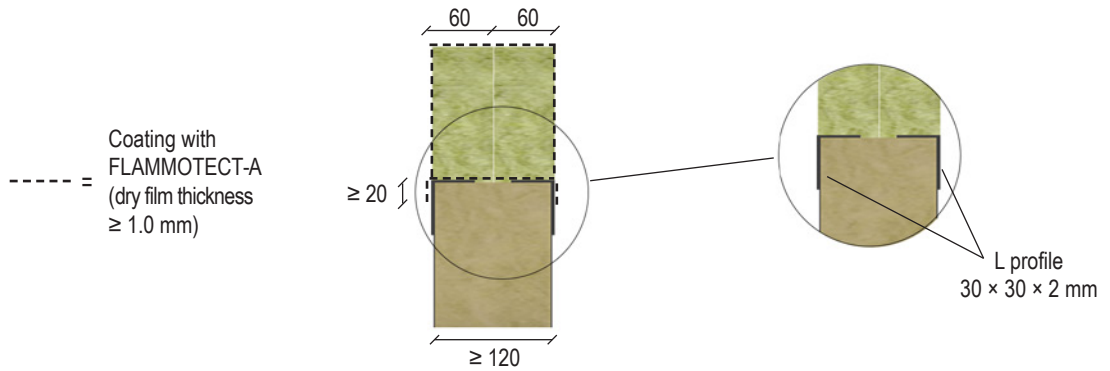
----- = Coating with FLAMMOTECT-A (dry film thickness ≥ 1.0 mm)

System Flammotect 2 × 60 mm

Timber floor



Sandwich panel wall



All specifications in mm