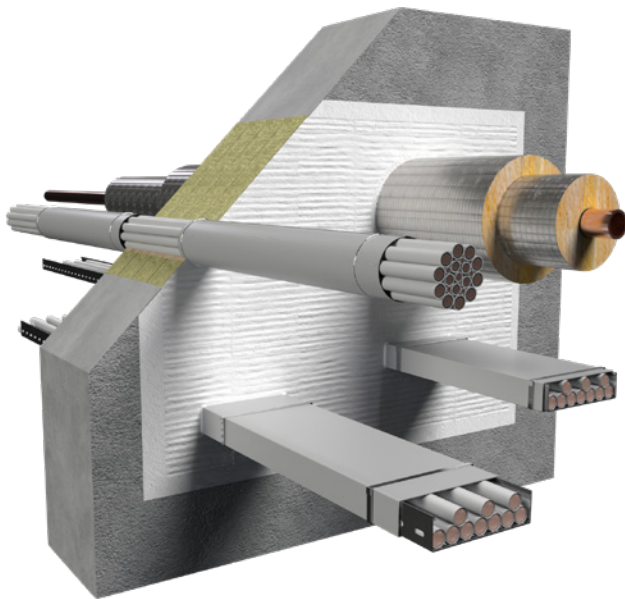


System Flammotect 4 × 60 mm

Mixed penetration sealing system made of mineral fibre boards (4 × 60 mm) with ablative fire protection coating



Fire Resistance Class

max. EI 240 in acc. with EN 13501-2

Areas of Application

- Solid wall, solid floor

System Data

Certificate of usability	ETA-22/0052	
Thickness of structural element	Solid wall	≥ 240
	Solid floor	≥ 200
Sealing thickness	All building elements	≥ 240
Maximum sealing size	Solid wall	Cables: 600 × 600 Pipes: 400 × 400
	Solid floor	600 × 1000 / 375 × ∞

All specifications in mm

Services

		max. Ø
	Cables	≤ 80
	Cable bundles	≤ 100 / ≤ 21
	Cable trays	✓
	Non-combustible pipes (steel, stainless steel, cast iron)	≤ 323.9

* All specifications in mm

Please contact us for further information:

T +49 6746 9410-0 **E** bestellungen@flamro.de

W flamro.de

System Flammotect 4 × 60 mm

Products



FLAMMOTECT-A Coating

12.5 kg pail – Art. no. 01155131



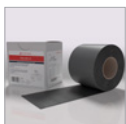
FLAMMOTECT-A Solid emulsion

12.5 kg pail – Art. no. 01155136



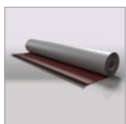
FLAMMOTECT-A Filler

12.5 kg pail – Art. no. 01155134
310 ml cartridge – Art. no. 01155115



DG-CR 1.5 Fire protection wrap

Rolle, 10 m – Art. no. 01261931

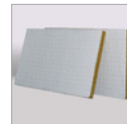


DG-CR 0.7

Fire protection cable bandage
Roll, 10 × 1100 mm – Art. no. 01260110
Roll, 20 × 1100 mm – Art. no. 01260231

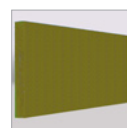
Metal strap
100 × 15 mm – Art. no. 01234000

Fastening clamps
1000 pcs. – Art. no. 01234100



Mineral fibre boards

pre-coated on one side with
FLAMMOTECT-A
Dimensions 1000 × 600 × 60 mm
Box with 4 pcs. – Art. no. 01182165



Mineral fibre board in acc. with EN 13162

Criteria: density $\geq 150 \text{ kg/m}^3$
Reaction to fire class A1 in acc. with
EN 13501:1
Melting point $\geq 1000 \text{ }^\circ\text{C}$.
(TR10) tensile strength vertical to board
surface $\geq 10 \text{ kPa}$ according to EN 1607
Thickness $\geq 60 \text{ mm}$



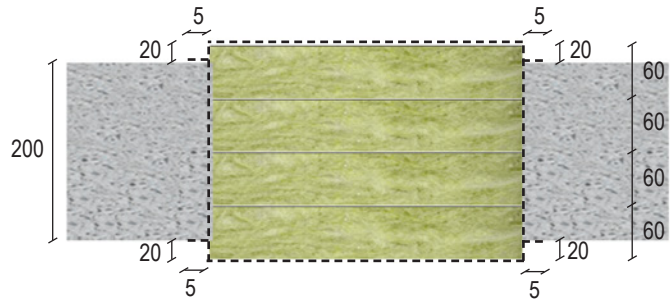
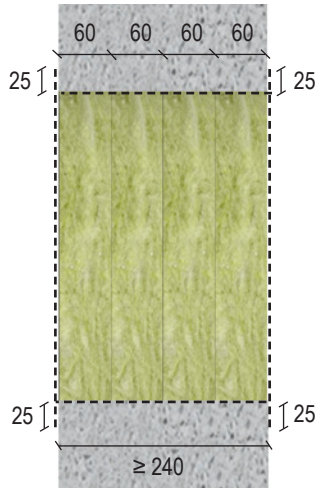
Label

1 piece – Art. no. 14003

System Flammotect 4 × 60 mm

Design Variants

Solid wall and floor



----- = Coating with FLAMMOTECT-A (dry film thickness ≥ 2.0)

All specifications in mm