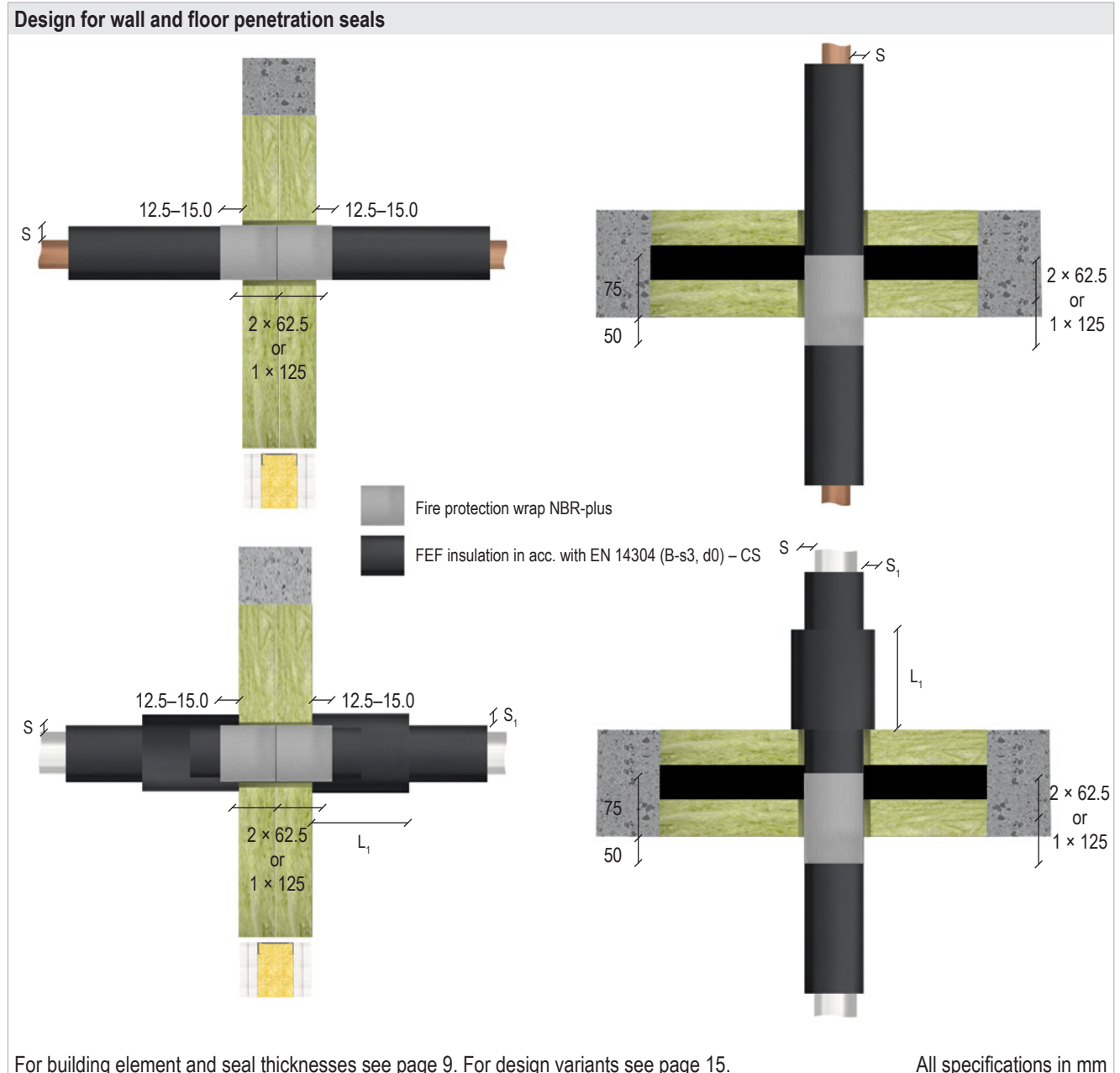


System Flammotect 2 × 50 mm

8.7.2 Design with FEF insulation and fire protection wrap NBR-plus

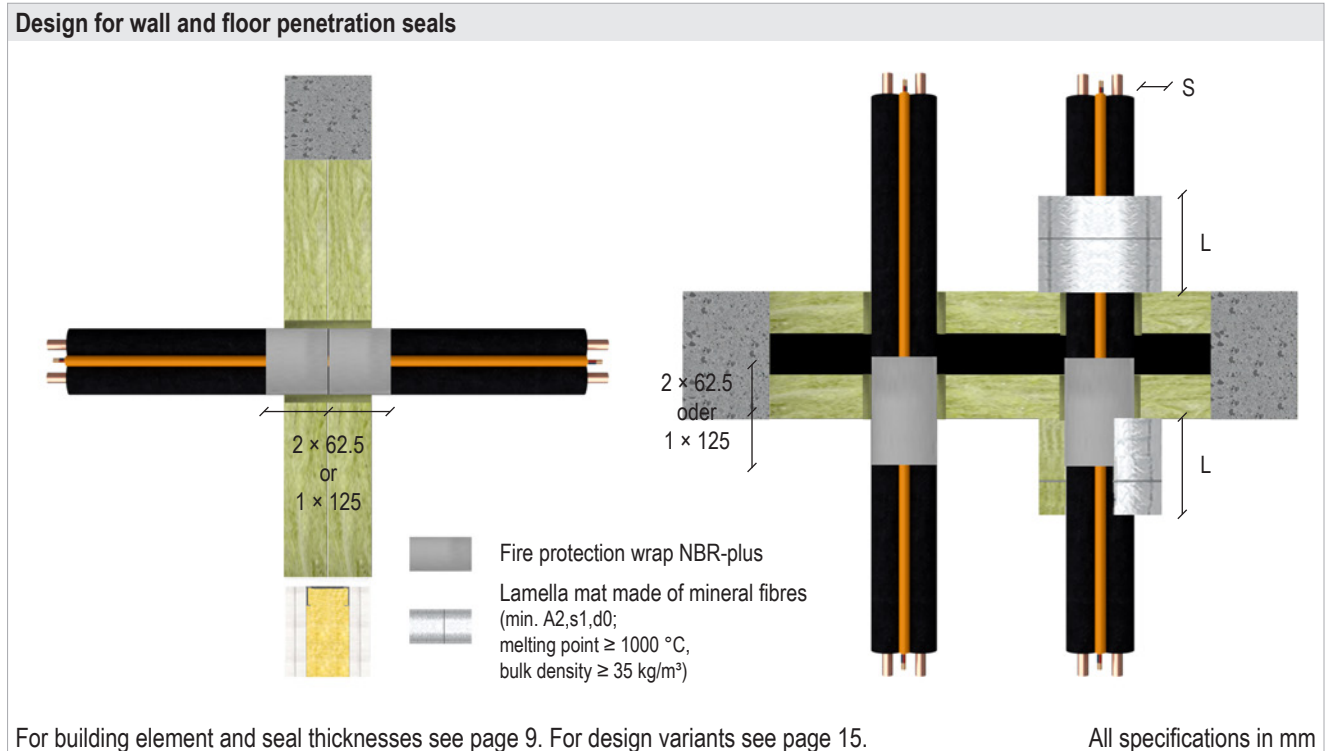


System Flammotect 2 × 50 mm

Wall							
Service		Section insulation made of FEF	Protective insulation made of FEF		Fire protection wrap NBR-plus		Fire resistance class
Pipe outer Ø [mm]	Pipe wall thickness [mm]	Thickness S [mm]	Length L ₁ [mm]	Thickness S ₁ [mm]	Number of wraps [n]	Number of layers [n]	
Copper, steel, stainless steel or cast iron							
≤ 15.0	0.8–14.2	10.0	–	–	1 × 125 or 2 × 62.5	1	EI 120 U/C
> 15.0 – ≤ 54.0		19.0–38.0				2	EI 120 U/C
> 54.0 – ≤ 88.9		25.0				2	EI 120 U/C
≤ 42.0		10.0				1	EI 90 U/C
> 42.0 – ≤ 88.9		19.0–38.0				2	EI 90 U/C
Steel, stainless steel or cast iron							
≤ 15.0	0.8–14.2	10.0–38.0	–	–	1 × 125 or 2 × 62.5	2	EI 120 U/C
> 15.0 – ≤ 88.9		19.0–38.0				2	EI 120 U/C
> 88.9 – ≤ 114.3		19.0–38.0	250	19		2	EI 120 U/C
> 114.3 – ≤ 159.0		25.0–38.0	250	19		2	EI 120 U/C
> 159.0 – ≤ 219.1		25.0–38.0	600	38		2	EI 120 U/C
Floor							
Service		Section insulation made of FEF	Protective insulation made of FEF		Fire protection wrap NBR-plus		Fire resistance class
Pipe outer Ø [mm]	Pipe wall thickness [mm]	Thickness S [mm]	Length L ₁ [mm]	Thickness S ₁ [mm]	Number of wraps [n]	Number of layers [n]	
Copper, steel, stainless steel or cast iron							
≤ 42.0	0.6–14.2	9.0–40.0	–	–	1 × 125 or 2 × 62.5	2	EI 90 U/C
> 42.0 – ≤ 60.0		10.0				1	EI 90 U/C
		13.0–40.0				2	EI 90 U/C
≤ 60.0		13.0–40.0				2	EI 120 U/C
> 60.0 – ≤ 88.9		25.0				2	EI 120 U/C
	19.0–38.0	2	EI 90 U/C				
Steel, stainless steel or cast iron							
≤ 159.0	0.6–14.2	25.0–38.0	250	25	1 × 125 or 2 × 62.5	2	EI 90 U/C
> 159.0 – ≤ 219.1			250	38			EI 90 U/C

System Flammotect 2 × 50 mm

8.8 HVAC split line combinations



Combination	Fire protection wrap NBR-plus		Mineral fibre lamella mat		Fire resistance class	
	Number of wraps [n]	Number of layers [n]	Length L [mm]	Thickness S [mm]	Wall	Floor
Copper pipe ≤ 2 × Ø 18 mm, + 9 mm PE foam, + 1 pipe PVC-U Ø ≤ 25.0 × 1.5 mm, + ≤ 3 × cables Ø ≤ 14.0 mm	1 × 125 or 2 × 62.5	2	–	–	EI 120	EI 120
Copper pipe ≤ 2 × Ø 22 mm, + 9 mm PE foam, + 1 pipe PVC-U Ø ≤ 25.0 × 1.5 mm, + ≤ 2 × cables Ø ≤ 21.0 mm	1 × 125 or 2 × 62.5	2	≥ 250	≥ 30	–	EI 90