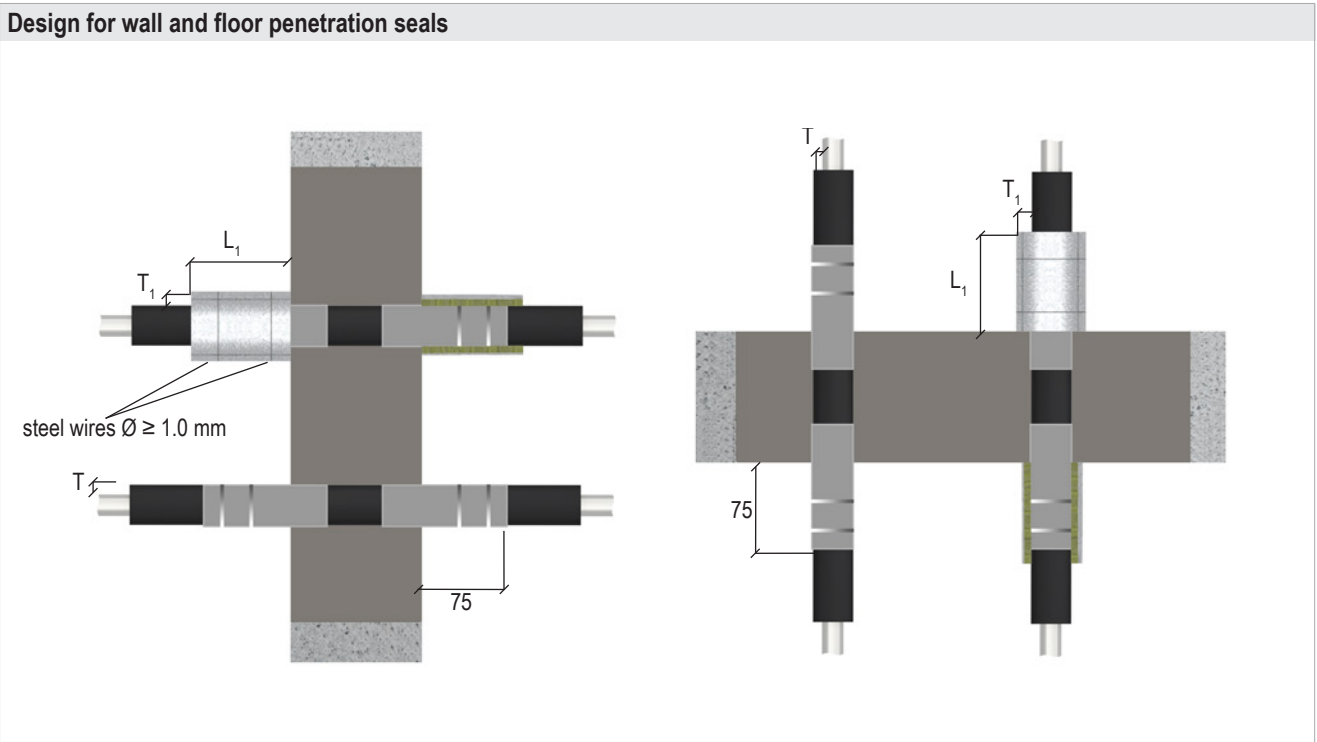


Novasit BM

8.6.3 Section insulation made of combustibile FEF insulation in acc. with EN 14304

- Depending on pipe wall thickness and outer diameter, an additional protective insulation with lamella mats may be necessary.
- The insulation must be fastened to the pipe with tensioning straps or wire.
- In floor installations appropriate measures must be taken to prevent the insulation from slipping.
- The fire protection wrap DG-CR 1.5 is coated on one side and equipped with a protective film. The film must be removed before applying the wrap. The wrap is applied with the coated side facing inwards and fastened with steel wires.
- The wrap (125 mm) must be applied in such a way that 50 mm are inside the seal.



For thicknesses and design variants, see page 29

All specifications in mm

Pipe		Insulation thickness T [mm]	Fire protection wrap DG-CR 1.5						Fire resistance class	
Material	Outer Ø [mm]		Wrap width [mm]	Number of wraps [n]	Number of layers [n]	Overlap [mm]	Inside seal [mm]	Outside seal [mm]	Wall	Floor
Copper	Ø ≤ 28.0	9-25	125	2	2	0	50	75	EI 120 C/U	EI 120 C/U
	Ø ≤ 42.0	10-44								
	Ø ≤ 54.0	13-50								
	Ø ≤ 76.0	13							-	EI 90 C/U
		14-50								
	Ø ≤ 88.9*	19-50							EI 120 C/U	EI 120 C/U
Ø ≤ 108.0**	25-50	EI 120 C/U	EI 120 C/U							
Steel, stainless steel, cast iron	Ø ≤ 168.3*	19-50						EI 120 C/U	EI 120 C/U	

* additional protective insulation with mineral fibre mat ($L_1 \geq 500 \text{ mm} \times T_1 \geq 40 \text{ mm}$)

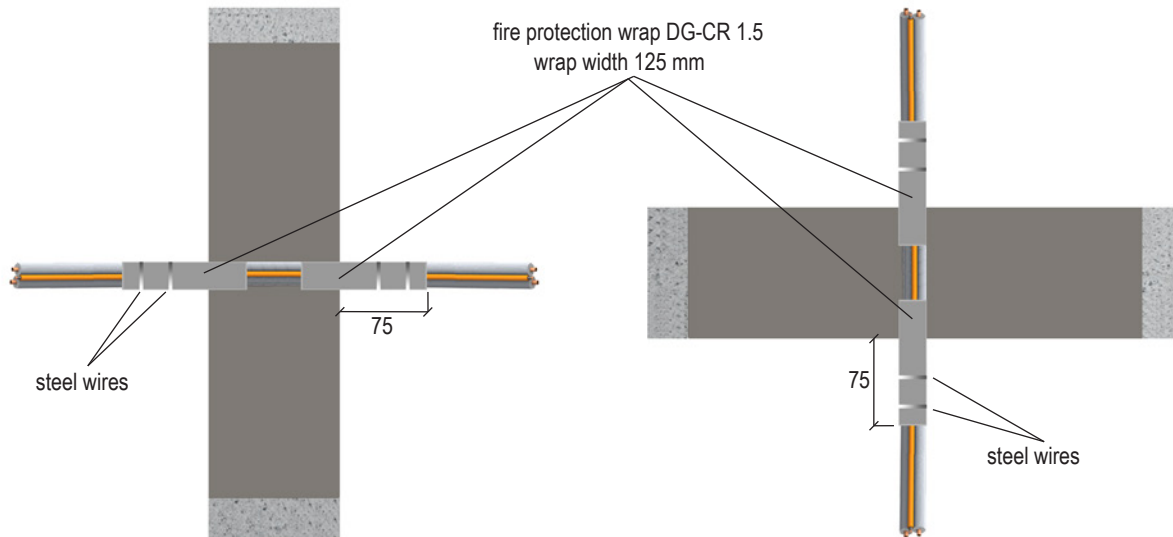
**additional protective insulation with mineral fibre mat ($L_1 \geq 750 \text{ mm} \times T_1 \geq 40 \text{ mm}$)

Novasit BM

8.7 HVAC split line combinations

- HVAC split line combinations Tubolit DuoSplit (copper pipes with PE insulation, one plastic pipe PE-100 and two additional cables) must be installed at a right angle to the surface of the building element.
- The HVAC split line combinations must be wrapped with the fire protection wrap DG-CR 1.5 (width 125 mm).
- The fire protection wrap DG-CR 1.5 is coated on one side and equipped with a protective film. The film must be removed before applying the wrap. The wrap is applied with the coated side facing inwards and fastened with steel wires.
- The wrap (125 mm) must be applied in such a way that 50 mm are inside the seal.

Design for wall and floor penetration seals



For thicknesses and design variants, see page 29

All specifications in mm

Wall and floor											
Pipe material	Outer Ø [mm]	Number of additional cables Ø ≤ 14 mm [n]	Pipe insulation [type, mm]	PE pipe Ø [mm]	Fire protection wrap DG-CR 1.5						Fire resistance class
					Wrap width [mm]	Number of wraps [n]	Number of layers [n]	Overlap [mm]	Inside seal [mm]	Outside seal [mm]	
Copper	2× ≤ 10/18	2	PEF ≤ 9.0	≤ 25	125	2	2	0	50	75	EI 120