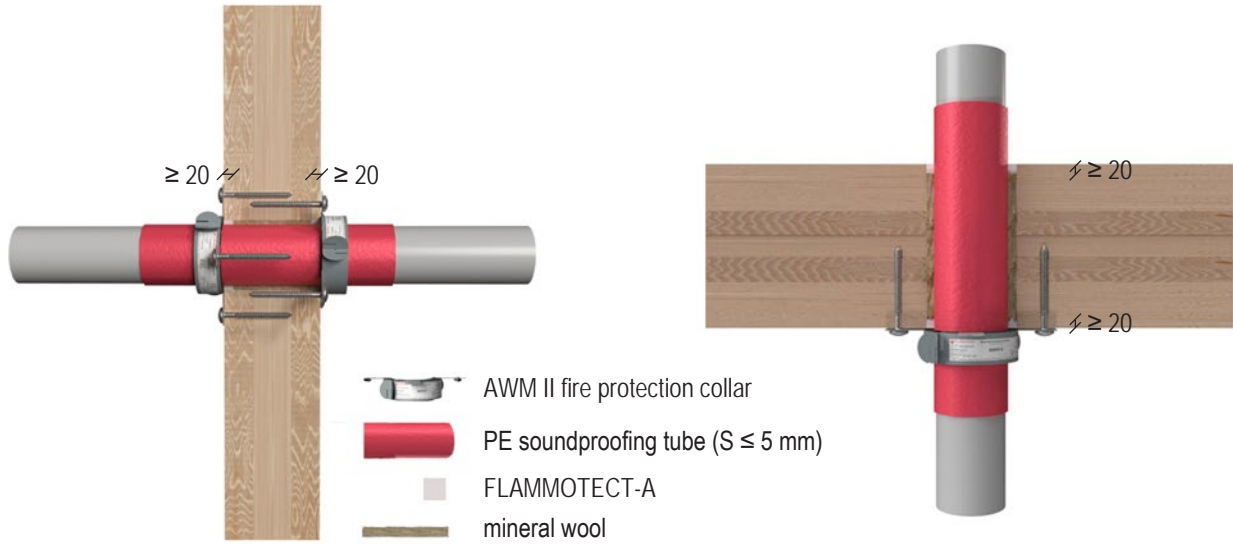
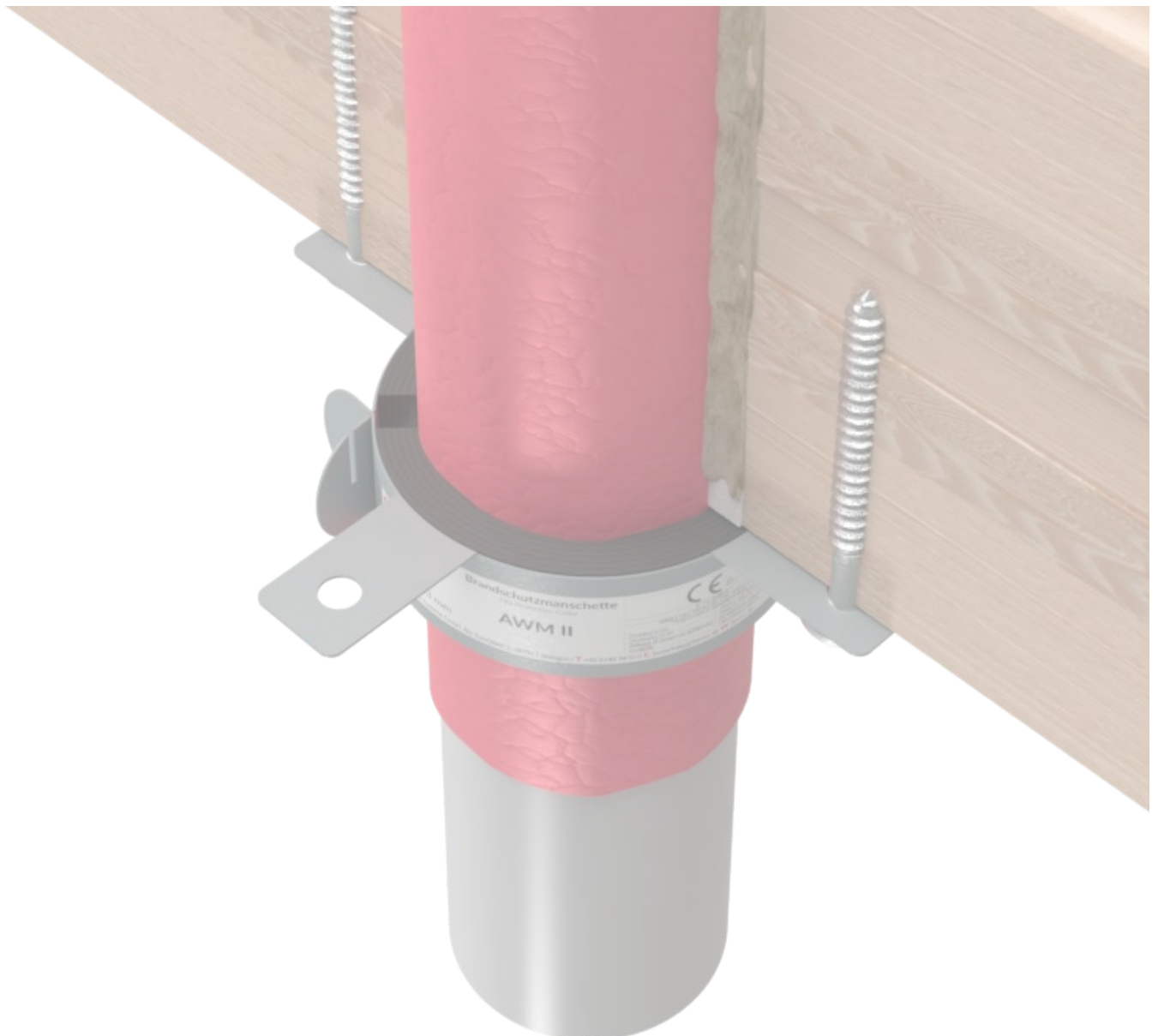


Combustible pipes with fire protection collar in wall and floor seals



All specifications in mm

The fire protection collar must be fastened with timber construction screws (on both sides of wall: length 80 mm, $\varnothing \geq 8$ mm. On underside of floor: length 100 mm, $\varnothing \geq 6$ mm).



Wall thickness ≥ 100 mm, CLT layers: 20/20/20/20/20
 Floor thickness: ≥ 100 mm, CLT layers: 20/20/20/20/20

Pipe material / type	Outer diameter [mm]	Pipe wall thickness [mm]	Fire resistance class	
			Wall	Floor
PP-H	$\geq 32.0 - \leq 50.0$	1.8	EI 60 U/U	EI 60 U/U
	$> 50.0 - \leq 75.0$	1.8-1.9		
	$> 75.0 - \leq 90.0$	1.9-2.2		
	$> 90.0 - \leq 110.0$	2.2-2.7	-	
REHAU RAUPIANO LIGHT CONEL DRAIN	$\geq 50.0 - \leq 75.0$	1.8-2.0	EI 60 U/U	EI 60 U/U
	$> 75.0 - \leq 90.0$	2.0-2.2		
	$> 90.0 - \leq 110.0$	2.2-2.7		
Geberit Silent-db20	$\geq 56.0 - \leq 63.0$	3.2	EI 60 U/U	EI 60 U/U
	$> 63.0 - \leq 75.0$	3.2-3.6		
	$> 75.0 - \leq 90.0$	3.6-5.5		
	$> 90.0 - \leq 110.0$	5.5-6.0		
Geberit Silent-PP	$\geq 32.0 - \leq 50.0$	2.0	EI 60 U/U	EI 60 U/U
	$> 50.0 - \leq 75.0$	2.0-2.6		
	$> 75.0 - \leq 90.0$	2.6-3.1		
	$> 90.0 - \leq 110.0$	3.1-3.6		
Geberit Silent-Pro	$\geq 50.0 - \leq 75.0$	3.0-3.8	EI 60 U/U	EI 60 U/U
	$> 75.0 - \leq 90.0$	3.8-4.3		
	$> 90.0 - \leq 110.0$	4.3-4.5		
POLOPLAST POLO-KAL NG POLOPLAST POLO-KAL XS	$\geq 50.0 - \leq 75.0$	2.0-2.6	EI 60 U/U	EI 60 U/U
	$> 75.0 - \leq 90.0$	2.6-3.0		
	$> 90.0 - \leq 110.0$	3.0-3.4		
POLOPLAST POLO-KAL 3S	$\geq 75.0 - \leq 110.0$	3.8-4.8	EI 60 U/U	-
REHAU RAUPIANO PLUS	$\geq 50.0 - \leq 75.0$	1.8-2.0	EI 60 U/U	EI 60 U/U
	$> 75.0 - \leq 90.0$	2.0-2.2		
	$> 90.0 - \leq 110.0$	2.2-2.7		
Hakan Silenta Premium	$\geq 58.0 - \leq 90.0$	4.1-4.7	EI 60 U/U	-
	$> 90.0 - \leq 110.0$	4.7-5.3		
Wavin AS+	$\geq 50.0 - \leq 75.0$	3.0-3.5	EI 60 U/U	-
	$> 75.0 - \leq 90.0$	3.5-4.6		
	$> 90.0 - \leq 110.0$	4.6-5.3		
Wavin SiTech+	$\geq 32.0 - \leq 40.0$	2.0	EI 60 U/U	-
	$> 40.0 - \leq 50.0$	2.0-2.1		
	$\geq 50.0 - \leq 75.0$	2.1-2.6		
	$> 75.0 - \leq 90.0$	2.6-3.1		
	$> 90.0 - \leq 110.0$	3.1-3.6		
Ostendorf Skolan	$\geq 50.0 - \leq 75.0$	4.0-4.5	EI 60 U/U	EI 60 U/U
	$> 75.0 - \leq 90.0$	4.5		
	$> 90.0 - \leq 110.0$	4.5-5.3		
Pipelife MASTER 3	$\geq 50.0 - \leq 75.0$	1.8-2.1	EI 60 U/U	EI 60 U/U
	$> 75.0 - \leq 90.0$	2.1-2.5		
	$> 90.0 - \leq 110.0$	2.5-3.0		

Wall thickness ≥ 100 mm, CLT layers: 30/40/30 Floor thickness: ≥ 100 mm, CLT layers: 40/20/20/20/40				
Pipe material / type	Outer diameter [mm]	Pipe wall thickness [mm]	Fire resistance class	
			Wall	Floor
REHAU RAUPIANO LIGHT CONEL DRAIN	$\geq 50.0 - \leq 75.0$	1.8–2.0	EI 90 U/U	EI 90 U/U
	$> 75.0 - \leq 90.0$	2.0–2.2		
	$> 90.0 - \leq 110.0$	2.2–2.7		
Geberit Silent-db20	$\geq 56.0 - \leq 63.0$	3.2	EI 90 U/U	EI 90 U/U
	$> 63.0 - \leq 75.0$	3.2–3.6		
	$> 75.0 - \leq 90.0$	3.6–5.5		
	$> 90.0 - \leq 110.0$	5.5–6.0		
Geberit Silent-PP	$\geq 32.0 - \leq 50.0$	2.0	EI 90 U/U	EI 90 U/U
	$> 50.0 - \leq 75.0$	2.0–2.6		
	$> 75.0 - \leq 90.0$	2.6–3.1		
	$> 90.0 - \leq 110.0$	3.1–3.6		
Geberit Silent-Pro	$\geq 50.0 - \leq 75.0$	3.0–3.8	EI 90 U/U	EI 90 U/U
	$> 75.0 - \leq 90.0$	3.8–4.3		
	$> 90.0 - \leq 110.0$	4.3–4.5		
POLOPLAST POLO-KAL NG POLOPLAST POLO-KAL XS	$\geq 50.0 - \leq 75.0$	2.0–2.6	EI 90 U/U	EI 90 U/U
	$> 75.0 - \leq 90.0$	2.6–3.0		
	$> 90.0 - \leq 110.0$	3.0–3.4		
POLOPLAST POLO-KAL 3S	$\geq 75.0 - \leq 110.0$	3.8–4.8	EI 90 U/U	–
REHAU RAUPIANO PLUS	$\geq 50.0 - \leq 75.0$	1.8–2.0	EI 90 U/U	EI 90 U/U
	$> 75.0 - \leq 90.0$	2.0–2.2		
	$> 90.0 - \leq 110.0$	2.2–2.7		
Hakan Silenta Premium	$\geq 58.0 - \leq 90.0$	4.1–4.7	EI 90 U/U	–
	$> 90.0 - \leq 110.0$	4.7–5.3		
Wavin AS+	$\geq 50.0 - \leq 75.0$	3.0–3.5	EI 90 U/U	–
	$> 75.0 - \leq 90.0$	3.5–4.6		
	$> 90.0 - \leq 110.0$	4.6–5.3		
Wavin SiTech+	$\geq 32.0 - \leq 40.0$	2.0	EI 90 U/U	–
	$> 40.0 - \leq 50.0$	2.0–2.1		
	$\geq 50.0 - \leq 75.0$	2.1–2.6		
	$> 75.0 - \leq 90.0$	2.6–3.1		
	$> 90.0 - \leq 110.0$	3.1–3.6		

* In CLT walls and floors with the fire resistance class EI 120 these pipes can also attain EI 120 at a diameter of ≤ 110 mm, sometimes even at a diameter of ≤ 160 mm. Ask our service for the classification report with the respective specifications.