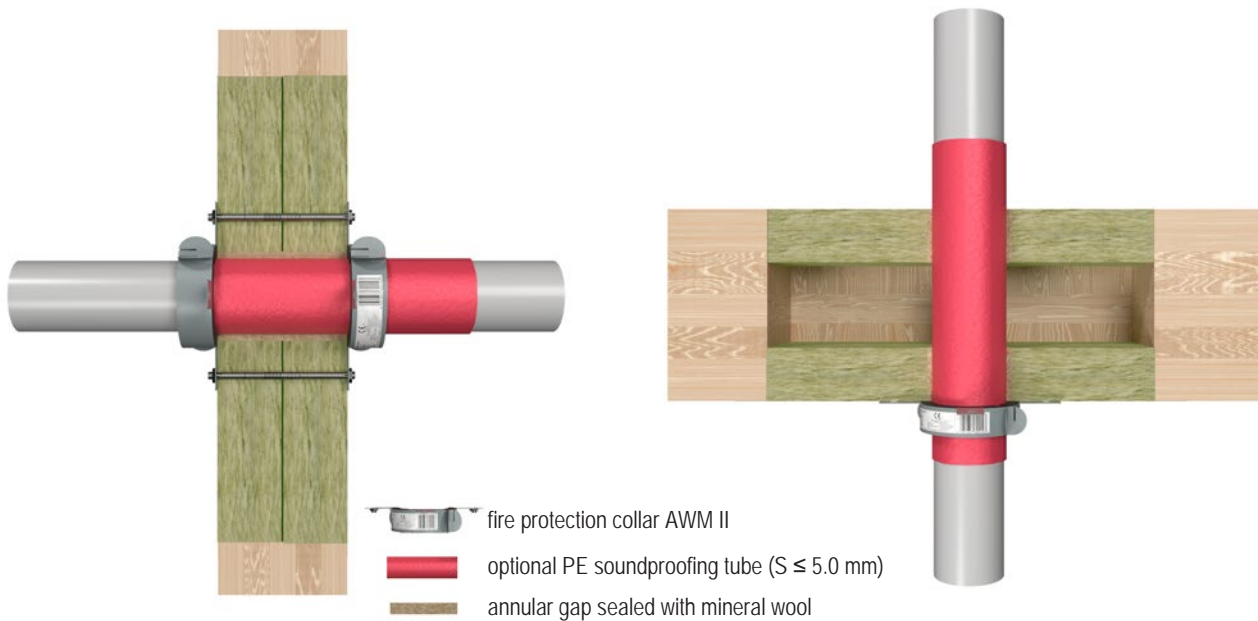


## Combustible pipes with pipe collar in wall and floor seals



All specifications in mm

Consult the installation manual for specific information on how to fasten the pipe collar.

Wall – standard pipes (fastened with coarse thread screws)				
Pipe material	Outer diameter [mm]	Pipe wall thickness [mm]	Pipe collar	Fire resistance class*
PVC-U, PVC-C	32.0–160.0	1.8–11.9	AWM II on both sides	EI 90 U/U
PE-HD, ABS, SAN + PVC	32.0–50.0	1.8–4.6		EI 90 U/U
	> 50.0 – 160.0	1.9–14.6		EI 90 U/U
PP	32.0–50.0	1.8–4.6		EI 90 U/U
	> 50.0 – 160.0	1.9–14.6		EI 90 U/U
PE-HD, ABS, SAN + PVC	32.0–160.0	2.7–4.6		EI 90 U/U
PP	110.0	10.0		EI 90 U/U

Wall – non-standard pipes (fastened with coarse thread screws)				
Type of pipe	Outer diameter [mm]	Pipe collar	Fire resistance class*	
CONEL DRAIN	40.0–160.0	AWM II on both sides	EI 90 U/U	
Pipeliflife Master 3	40.0–160.0		EI 90 U/U	
KE KELIT PHON EX AS	58.0–160.0		EI 90 U/U	
Wavin AS	58.0–160.0		EI 90 U/U	
POLO-KAL 3S	90.0–110.0		EI 90 U/U	
POLO-KAL NG, POLO-KAL XS	40.0–110.0		EI 90 U/U	
REHAU RAUPIANO PLUS	50.0–160.0		EI 90 U/U	
REHAU RAUPIANO LIGHT	40.0–160.0		EI 90 U/U	
Geberit Silent-dB20	56.0–110.0		EI 90 U/U	
	56.0–160.0		EI 90 U/U	
Geberit Silent-PP	32.0–160.0		EI 90 U/U	
Geberit Silent-Pro	50.0–160.0		EI 90 U/U	
GF Silenta Premium	58.0–160.0		EI 90 U/U	
Hakan Silenta Premium	58.0–160.0		EI 90 U/U	
Wavin SiTech+	32.0–160.0		EI 90 U/U	
Valsir Triplus	32.0–160.0		EI 90 U/U	

\* Installing two mineral fibre boards with a thickness of 60 mm or three mineral fibre boards with a thickness of 50 mm raises the fire resistance class to EI 120 (exception: Wavin SiTech+).

Floor – standard pipes (fastened with coarse thread screws)				
Pipe material	Outer diameter [mm]	Pipe wall thickness [mm]	Pipe collar	Fire resistance class*
PVC-U, PVC-C	32.0–50.0	1.8–5.6	AWM II on underside	EI 90 U/U
	> 50.0 – 160.0	1.8–12.3		EI 90 U/U
PE-HD, ABS, SAN + PVC	32.0–125.0	1.8–14.6		EI 90 U/U
PP	32.0–50.0	1.8–4.6		EI 90 U/U
	> 50.0 – 160.0	1.9–14.6		EI 90 U/U
PE-HD, ABS, SAN + PVC	160.0	4.0		EI 90 U/U

Floor – non-standard pipes (fastened with coarse thread screws)			
Type of pipe	Outer diameter [mm]	Pipe collar	Fire resistance class*
REHAU RAUPIANO LIGHT	75.0–110.0	AWM II on underside	EI 90 U/U
CONEL DRAIN	75.0–110.0		EI 90 U/U
POLO-KAL NG, POLO-KAL XS	90.0–160.0		EI 90 U/U
Geberit Silent-PP	40.0–110.0		EI 90 U/U
Geberit Silent-Pro	50.0–110.0		EI 90 U/U
GF Silenta Premium	58.0–110.0		EI 90 U/U
Hakan Silenta Premium	58.0–110.0		EI 90 U/U
Wavin SiTech+	32.0		EI 90 U/U
	75.0–160.0		EI 90 U/U
Valsir Triplus	32.0–50.0		EI 90 U/U

\* Installing two mineral fibre boards with a thickness of 60 mm or three mineral fibre boards with a thickness of 50 mm raises the fire resistance class to EI 120 (exception: Wavin SiTech+).