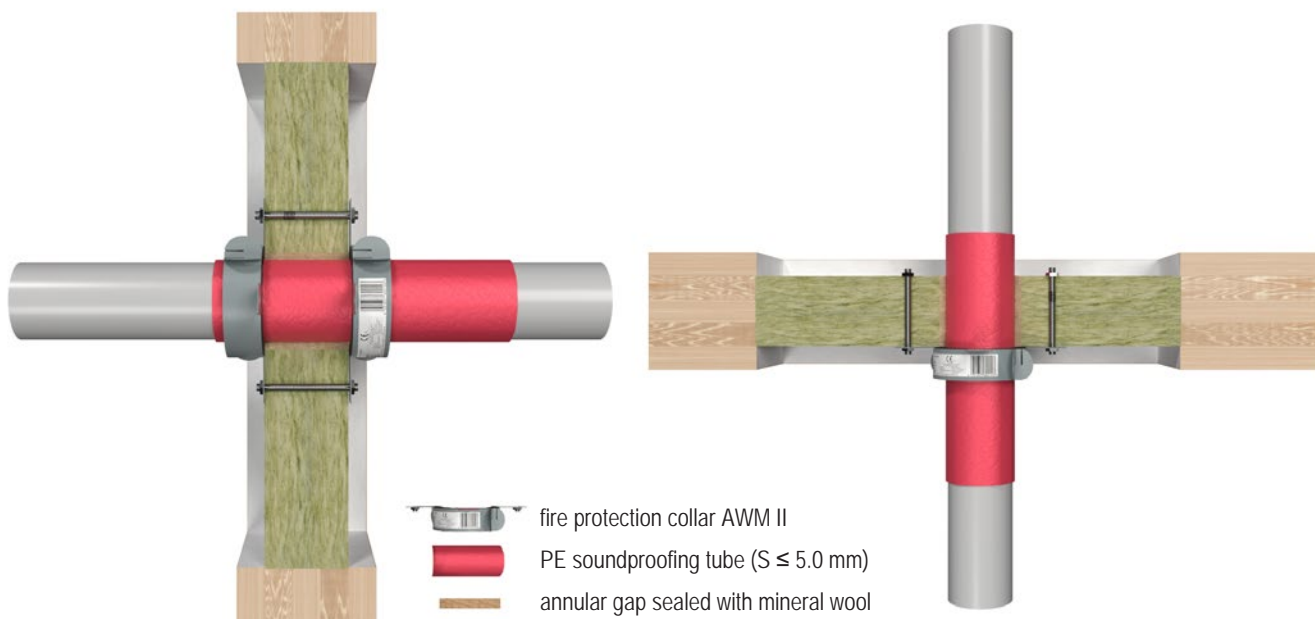


## Combustible pipes with pipe collar in wall and floor seals



All specifications in mm

### Wall – standard pipes

Pipe material	Outer diameter [mm]	Pipe wall thickness [mm]	Pipe collar	Fire resistance class	
PVC-U, PVC-C	32.0–50.0	1.5–5.6	AWM II on both sides	EI 90 U/U	
	63.0–75.0	1.6–6.6			
	90.0–110.0	1.8–8.1			
	125.0–160.0	3.2–11.8			
PE-HD, ABS, SAN + PVC	32.0–50.0	1.8–4.6		AWM II on both sides	EI 90 U/U
	63.0–75.0	2.2–6.6			EI 60 U/U / E 90 U/U
		5.1–6.6			EI 90 U/U
	90.0–110.0	2.7–10.0			EI 60 U/U / E 90 U/U
		10.0			EI 90 U/U
	125.0–160.0	4.0–14.6			EI 90 U/U
PP-H	32.0–50.0	1.8–4.6		AWM II on both sides	EI 90 U/U
	63.0–75.0	2.2–6.6			
	90.0–110.0	2.7–10.0			
	125.0–160.0	4.0–14.6			

### Wall – non-standard pipes

Type of pipe	Outer diameter [mm]	Pipe collar	Fire resistance class
REHAU RAUPIANO LIGHT, CONEL DRAIN	≤ 75.0	AWM II on both sides	EI 90 U/U
	90.0		EI 60 U/U / E 90 U/U
	110.0		EI 90 U/U
Geberit Silent-db20	≤ 160.0		EI 90 U/U
Geberit Silent-PP	≤ 160.0		EI 90 U/U
Geberit Silent-Pro	≤ 160.0		EI 90 U/U
POLOPLAST POLO-KAL 3S POLOPLAST POLO-KAL NG POLOPLAST POLO-KAL XS	≤ 160.0		EI 90 U/U

Wall – non-standard pipes			
Type of pipe	Outer diameter [mm]	Pipe collar	Fire resistance class
REHAU RAUPIANO PLUS	50.0	AWM II on both sides	EI 90 U/U
	75.0		EI 60 U/U / E 90 U/U
	≤ 110.0		EI 90 U/U
Wavin AS+	≤ 160.0		EI 90 U/U

Floor – standard pipes				
Pipe material	Outer diameter [mm]	Pipe wall thickness [mm]	Pipe collar	Fire resistance class
PVC-U, PVC-C	32.0–50.0	1.5–5.6	AWM II on underside	EI 60 U/U / E 90 U/U
	63.0–75.0	1.6–6.6		EI 60 U/U / E 90 U/U
	90.0–110.0	1.8–7.0/8.1		EI 60 U/U / E 90 U/U
	125	2.5–9.2		EI 60 U/U / E 90 U/U
	140.0–160.0	3.2–11.8		EI 60 U/U / E 90 U/U
PE-HD, ABS, SAN + PVC	32.0–50.0	1.8–4.6		EI 60 U/U
	63.0–75.0	2.3–6.6		EI 90 U/U
	90.0	2.8–8.2		EI 90 U/U
	110.0	3.4–10.0		EI 90 U/U
	125.0–≤ 160.0	4.0–14.6		EI 60 U/U
PP-H	32.0–50.0	1.8–4.6		EI 60 U/U
	63.0–75.0	1.9–8.6	EI 90 U/U	
	90.0	2.2–8.2	EI 90 U/U	
	110.0	2.7–10.0	EI 90 U/U	
	125.0	3.1–3.9	EI 90 U/U	
	125.0–160.0	4.0–14.6	EI 60 U/U	

Floor – non-standard pipes			
Type of pipe	Outer diameter [mm]	Pipe collar	Fire resistance class
Geberit Silent-db20	≤ 160	AWM II on underside	EI 90 U/U
Geberit Silent-PP	≤ 160		EI 90 U/U
Geberit Silent-Pro	≤ 110		EI 90 U/U
	≤ 160		EI 60 U/U / E 90 U/U