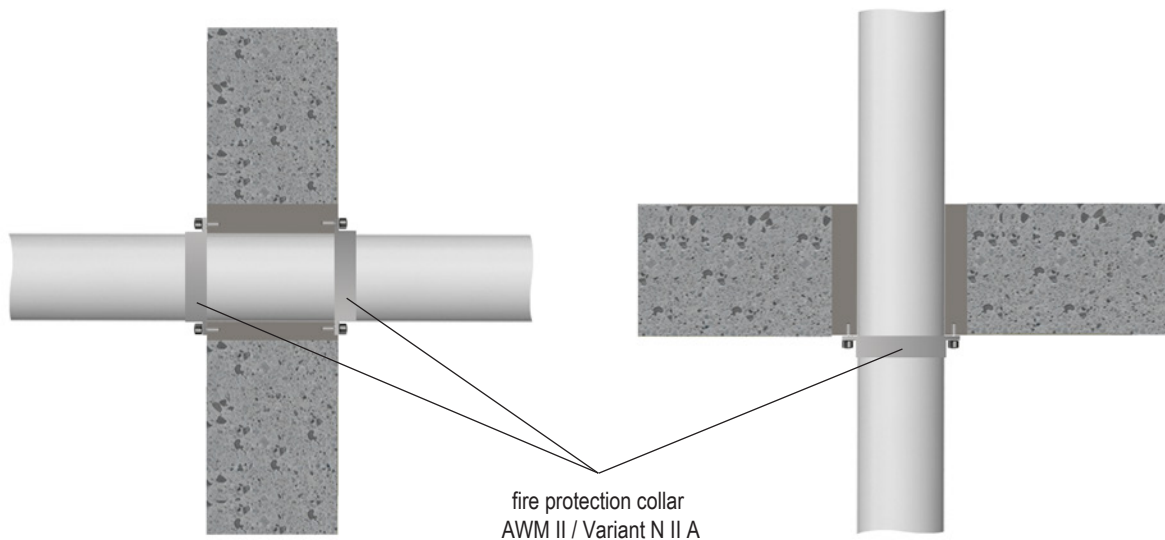


Novasit BM

8.4.2 Design variant with fire protection collar AWM II / Variant N II A

- In wall seals two fire protection collars AWM II / Variant N II A must be installed on both sides of the wall. In floor seals one fire protection collar must be installed on the lower side of the floor.
- Pipes must be arranged vertically to the surface of the building element.
- The penetration sealing may only be used on pneumatic conveyors, compressed air lines etc. if the pipeline system is switched off in the event of a fire.
- Optionally a noise insulation ≤ 5 mm may be installed.

Design for wall and floor penetration seals



For thicknesses and design variants, see page 29

All specifications in mm

Novasit BM

Wall and floor				
Service	Outer Ø [mm]	Measure	Fire resistance class	
			Wall	Floor
PVC-U	≤ 75.0	Wall: AWM II / Variant N II A collar on both sides Floor: Variant N II A / N II KS collar on lower side	EI 120 U/U	EI 120 U/U
	≤ 160.0		EI 120 U/U	EI 90 U/U
PE-HD	≤ 110.0		EI 120 U/U	EI 120 U/U
	≤ 125.0		EI 90 U/U	EI 120 U/U
	≤ 160.0		EI 90 U/U	EI 90 U/U
PP-H	≤ 110.0		EI 120 U/U	EI 120 U/U
	≤ 160.0		EI 90 U/U	EI 120 U/U
POLO-KAL NG	≤ 110.0		EI 120 U/U	EI 90 U/U
	≤ 160.0		-	EI 90 U/U
POLO-KAL XS	≤ 110.0		EI 120 U/U	EI 120 U/U
	≤ 160.0		-	EI 90 U/U
Geberit Silent-PP	≤ 110.0		-	EI 90 U/U
Geberit Silent-Pro	≤ 160.0		EI 120 U/U	EI 120 U/U
Geberit Silent-db20	≤ 110.0		EI 120 U/U	-
	≤ 160.0		EI 90 U/U	-
GF Silenta Premium	≤ 160.0		EI 120 U/U	EI 120 U/U
CONEL DRAIN	≤ 110.0		EI 120 U/U	EI 90 U/U
REHAU RAUPIANO LIGHT	≤ 110.0		EI 120 U/U	EI 90 U/U
REHAU RAUPIANO PLUS	≤ 50.0		EI 120 U/U	-
Pipelife MASTER 3 PLUS	≤ 50.0		EI 120 U/U	-
KE KELIT PHONEX AS	≤ 50.0		EI 120 U/U	-
Wavin AS	≤ 50.0		EI 120 U/U	-
Wavin SiTech+	≤ 160.0		EI 120 U/U	EI 90 U/U
Valsir Triplus	≤ 50.0		EI 120 U/U	EI 90 U/U
	≤ 160.0		EI 120 U/U	-