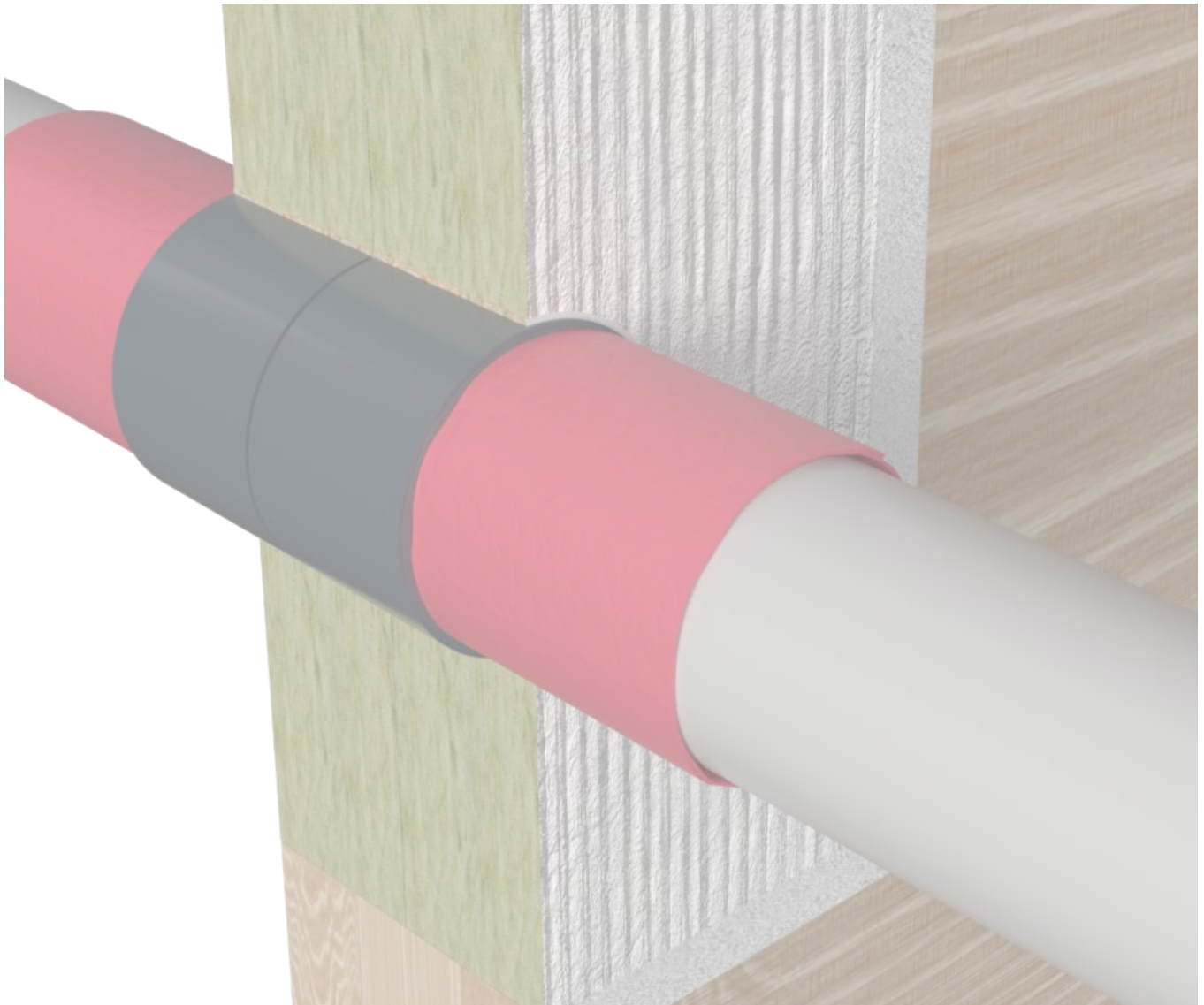


## Combustible pipes with fire protection wrap in wall and floor seals



All specifications in mm

The fire protection wrap KSL-W can either be installed flush with the seal surface or protrude up to 5 mm from the seal.



Wall – standard pipes																		
Pipe material	Outer diameter [mm]	Pipe wall thickness [mm]	KSL-W				Fire resistance class											
			Wrap width [mm]	Number of wraps [n]	Inside seal [mm]	Outside seal [mm]		Number of layers [n]										
PVC-U	≤ 50.0	1.8–5.6	50	2	45–50	0–5	2	EI 90 U/U										
	> 50.0 – ≤ 110.0	1.8–12.3					4											
PE-HD	≤ 50.0	1.8–4.6					50		2	45–50	0–5	2	EI 90 U/U					
	> 50.0 – ≤ 110.0	1.8–10.0										4						
PP	≤ 50.0	1.8–4.6										50		2	45–50	0–5	2	EI 90 U/U
	> 50.0 – ≤ 110.0	1.8–10.0															4	

Wall – non-standard pipes																																																				
Type of pipe	Outer diameter [mm]	KSL-W				Fire resistance class																																														
		Wrap width [mm]	Number of wraps [n]	Inside seal [mm]	Outside seal [mm]		Number of layers [n]																																													
Geberit Silent-PP	≤ 50.0	50	2	45–50	0–5	2	EI 90 U/U																																													
	≤ 110.0					4																																														
Geberit Silent-Pro	≤ 75.0					50		2	45–50	0–5	2	EI 90 U/U																																								
	≤ 110.0										4																																									
KE KELIT PHON EX AS	≤ 56.0										50		2	45–50	0–5	2	EI 90 U/U																																			
	≤ 110.0															4																																				
Pipelife Master 3	≤ 50.0															50		2	45–50	0–5	2	EI 90 U/U																														
	≤ 110.0																				4																															
POLO-KAL NG	≤ 50.0																				50		2	45–50	0–5	2	EI 90 U/U																									
	≤ 110.0																									4																										
CONEL DRAIN	≤ 50.0																									50		2	45–50	0–5	2	EI 90 U/U																				
	≤ 110.0																														4																					
Geberit Silent-dB 20	≤ 56.0																														50		2	45–50	0–5	2	EI 90 U/U															
	≤ 110.0																																			4																
Wavin SiTech+	≤ 50.0																																			50		2	45–50	0–5	2	EI 90 U/U										
	≤ 110.0																																								4											
POLO-KAL XS	≤ 50.0																																								50		2	45–50	0–5	2	EI 90 U/U					
	≤ 110.0																																													4						
REHAU RAUPIANO PLUS	≤ 50.0																																													50		2	45–50	0–5	2	EI 90 U/U
	≤ 110.0																																																		4	
REHAU RAUPIANO LIGHT	≤ 50.0	50	2	45–50	0–5		2																																												EI 90 U/U	
	≤ 110.0						4																																													
Silenta Premium	≤ 58.0					50	2	45–50	0–5	2		EI 90 U/U																																								
	≤ 110.0									4																																										

Floor – standard pipes								
Pipe material	Outer diameter [mm]	Pipe wall thickness [mm]	KSL-W				Fire resistance class	
			Wrap width [mm]	Number of wraps [n]	Inside seal [mm]	Outside seal [mm]		Number of layers [n]
PVC-U, PVC-C	≤ 50.0	1.8–5.6	50	1	45–50	0–5	2	EI 90 U/U
	≤ 110.0	1.8–12.3					4	EI 90 U/U
PE-HD, ABS, SAN + PVC	≤ 50.0	1.8–4.6					2	EI 90 U/U
	≤ 110.0	1.8–10.0					4	EI 90 U/U
PP	≤ 50.0	1.8–4.6					2	EI 90 U/U
	≤ 110.0	1.8–10.0					4	EI 90 U/U

Floor – non-standard pipes							
Type of pipe	Outer diameter [mm]	KSL-W				Fire resistance class	
		Wrap width [mm]	Number of wraps [n]	Inside seal [mm]	Outside seal [mm]		Number of layers [n]
Geberit Silent-PP	≤ 50.0	50	1	45–50	0–5	2	EI 90 U/U
	≤ 110.0					4	
Geberit Silent-Pro	≤ 75.0					2	
	≤ 110.0					4	
KE KELIT PHON EX AS	≤ 56.0					2	
	≤ 110.0					4	
Pipelife Master 3	≤ 50.0					2	
	≤ 110.0					4	
POLO-KAL NG	≤ 50.0					2	
	≤ 110.0					4	
CONEL DRAIN	≤ 50.0					2	
	≤ 110.0					4	
Geberit Silent-dB 20	≤ 56.0					2	
	≤ 110.0					4	
Wavin SiTech+	≤ 50.0					2	
	≤ 110.0					4	
POLO-KAL XS	≤ 110.0					4	
REHAU RAUPIANO PLUS	≤ 110.0					4	
REHAU RAUPIANO LIGHT	≤ 110.0	4					
Silenta Premium	≤ 58.0	2					
	≤ 110.0	4					