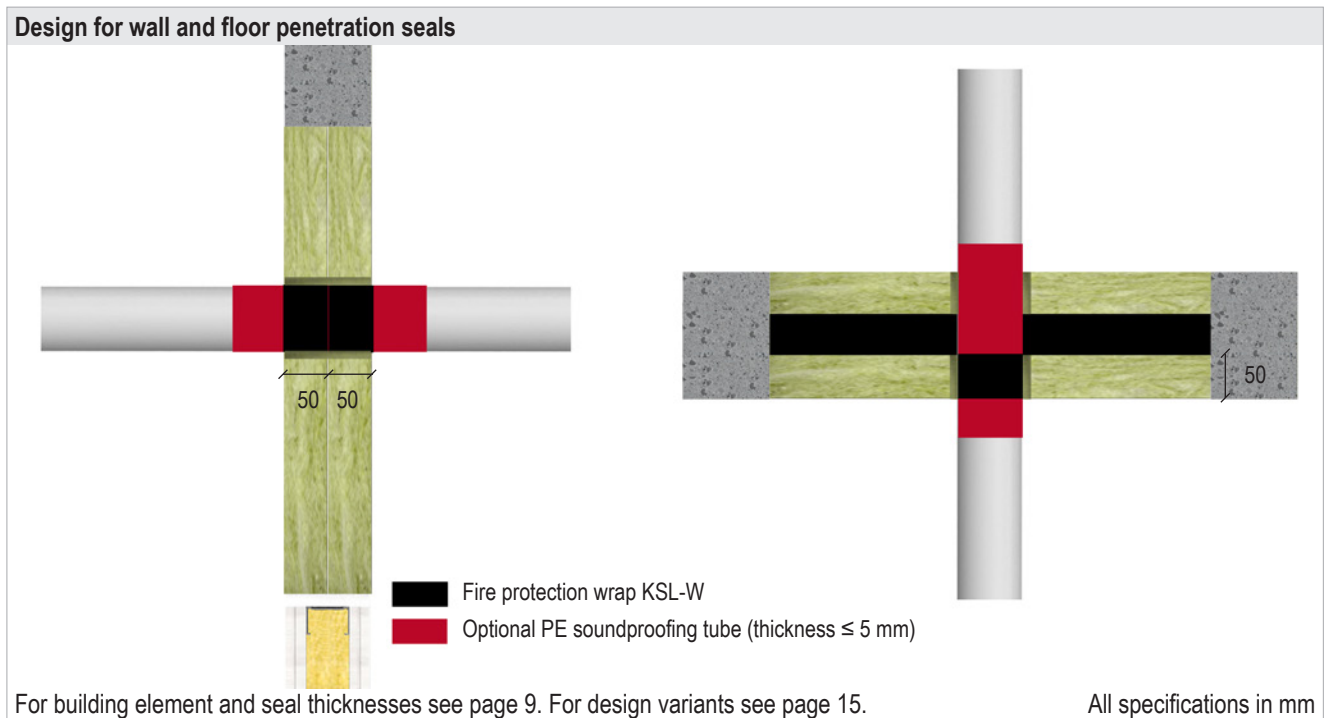


## System Flammotect 2 × 50 mm

### 8.5.4 Design with fire protection wrap KSL-W



Pipe outer Ø [mm]	Pipe wall thickness [mm]	Fire protection wrap KSL-W		Fire resistance class	
		Number of wraps × layers		Wall	Floor
		Wall	Floor		
<b>PVC-U, PVC-C</b>					
32–50	1.8–5.6	2 × 2 layers	1 × 2 layers	EI 120 U/U	EI 120 U/U
63–110	1.8–12.3	2 × 4 layers	1 × 4 layers	EI 120 U/U	EI 120 U/U
<b>PE-HD, ABS, SAN+PVC</b>					
32–50	1.8–4.6	2 × 2 layers	1 × 2 layers	EI 120 U/U	EI 120 U/U
63–110	1.8–10.0	2 × 4 layers	1 × 4 layers	EI 120 U/U	EI 120 U/U
<b>PP</b>					
32–50	1.8–4.6	2 × 2 layers	1 × 2 layers	EI 120 U/U	EI 120 U/U
63–110	1.8–10.0	2 × 4 layers	1 × 4 layers	EI 120 U/U	EI 120 U/U

## System Flammotect 2 × 50 mm

Pipe outer Ø [mm]	Fire protection wrap KSL-W		Fire resistance class	
	Number of wraps × layers		Wall	Floor
	Wall	Floor		
<b>Geberit Silent-PP</b>				
≤ 50.0	2 × 2 layers	1 × 2 layers	EI 120 U/U	EI 120 U/U
≤ 110.0	2 × 4 layers	1 × 4 layers	EI 120 U/U	EI 120 U/U
<b>Geberit Silent-Pro</b>				
≤ 75.0	2 × 2 layers	1 × 2 layers	EI 120 U/U	EI 120 U/U
≤ 110.0	2 × 4 layers	1 × 4 layers	EI 120 U/U	EI 120 U/U
<b>Geberit Silent-db20</b>				
≤ 56.0	2 × 2 layers	1 × 2 layers	EI 120 U/U	EI 120 U/U
≤ 110.0	2 × 4 layers	1 × 4 layers	EI 120 U/U	EI 120 U/U
<b>KE KELIT PHONEX AS</b>				
≤ 56.0	2 × 2 layers	1 × 2 layers	EI 120 U/U	EI 120 U/U
≤ 110.0	2 × 4 layers	1 × 4 layers	EI 120 U/U	EI 120 U/U
<b>Pipelife MASTER 3</b>				
≤ 50.0	2 × 2 layers	1 × 2 layers	EI 120 U/U	EI 120 U/U
≤ 110.0	2 × 4 layers	1 × 4 layers	EI 120 U/U	EI 120 U/U
<b>POLO-KAL NG / POLO-KAL XS</b>				
≤ 50.0	2 × 2 layers	1 × 2 layers	EI 120 U/U	EI 120 U/U
≤ 110.0	2 × 4 layers	1 × 4 layers	EI 120 U/U	EI 120 U/U
<b>REHAU RAUPIANO LIGHT</b>				
≤ 50.0	2 × 2 layers	1 × 2 layers	EI 120 U/U	EI 120 U/U
≤ 110.0	2 × 4 layers	1 × 4 layers	EI 120 U/U	EI 120 U/U
<b>REHAU RAUPIANO PLUS</b>				
≤ 50.0	2 × 2 layers	–	EI 120 U/U	–
≤ 110.0	2 × 4 layers	1 × 4 layers	EI 120 U/U	EI 120 U/U
<b>REHAU RAUSILENTO</b>				
≤ 50.0	2 × 2 layers	1 × 2 layers	EI 120 U/U	EI 120 U/U
≤ 110.0	2 × 4 layers	1 × 4 layers	EI 120 U/U	EI 120 U/U
<b>CONEL DRAIN</b>				
≤ 50.0	2 × 2 layers	1 × 2 layers	EI 120 U/U	EI 120 U/U
≤ 110.0	2 × 4 layers	1 × 4 layers	EI 120 U/U	EI 120 U/U
<b>Wavin SiTech+</b>				
≤ 50.0	2 × 2 layers	1 × 2 layers	EI 120 U/U	EI 120 U/U
≤ 110.0	2 × 4 layers	1 × 4 layers	EI 120 U/U	EI 120 U/U
<b>GF Silenta Premium</b>				
≤ 58.0	2 × 2 layers	1 × 2 layers	EI 120 U/U	EI 90 U/U
≤ 110.0	2 × 4 layers	1 × 4 layers	EI 120 U/U	EI 120 U/U
<b>Hakan Silenta Premium</b>				
≤ 58.0	2 × 2 layers	1 × 2 layers	EI 120 U/U	EI 90 U/U
≤ 110.0	2 × 4 layers	1 × 4 layers	EI 120 U/U	EI 120 U/U