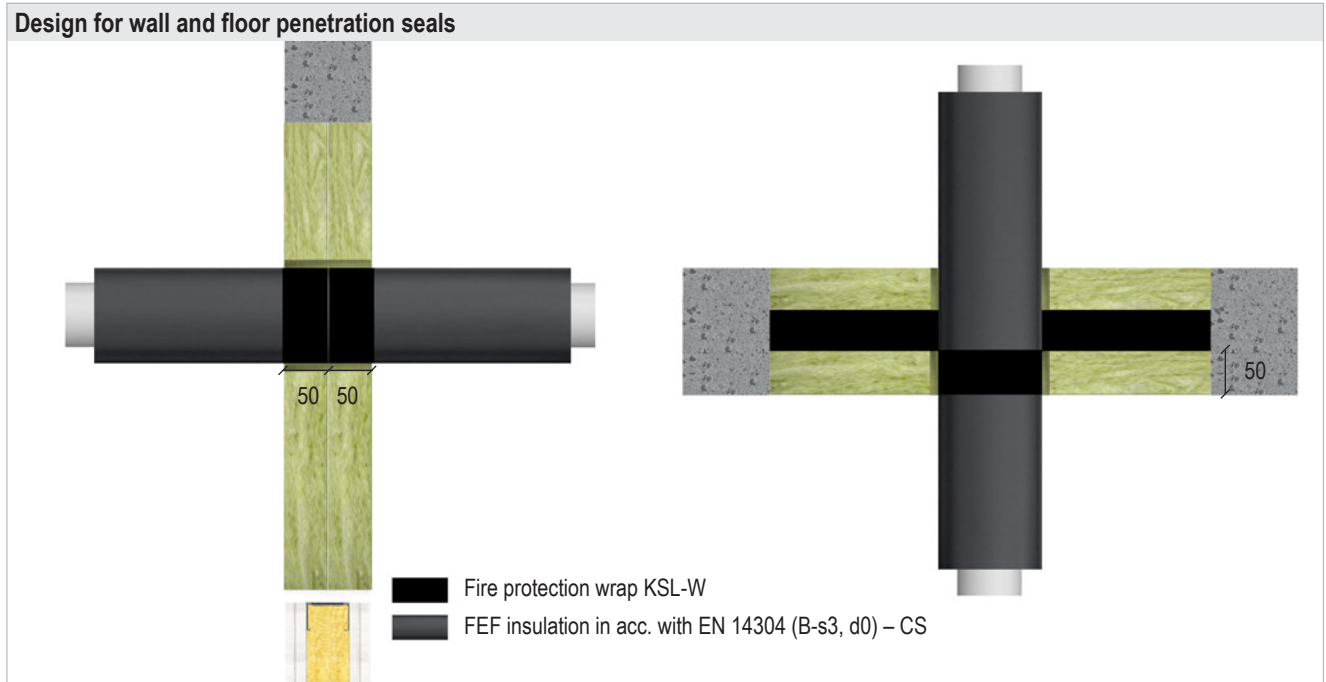


System Flammotect 2 × 50 mm

8.5.5 Design with fire protection wrap KSL-W and FEF insulation



For building element and seal thicknesses see page 9. For design variants see page 15.

All specifications in mm

Wall				
Dimensions		FEF insulation	Fire protection wrap KSL-W	Fire resistance class
Pipe outer Ø [mm]	Pipe wall thickness [mm]	Thickness [mm]	Number of wraps × layers	
PP-H				
40.0–50.0	1.8–4.6	9.0–20.5	2 × 3 layers	EI 90 U/U
50.0–75.0	1.9–8.2	9.0–22.0		EI 90 U/U

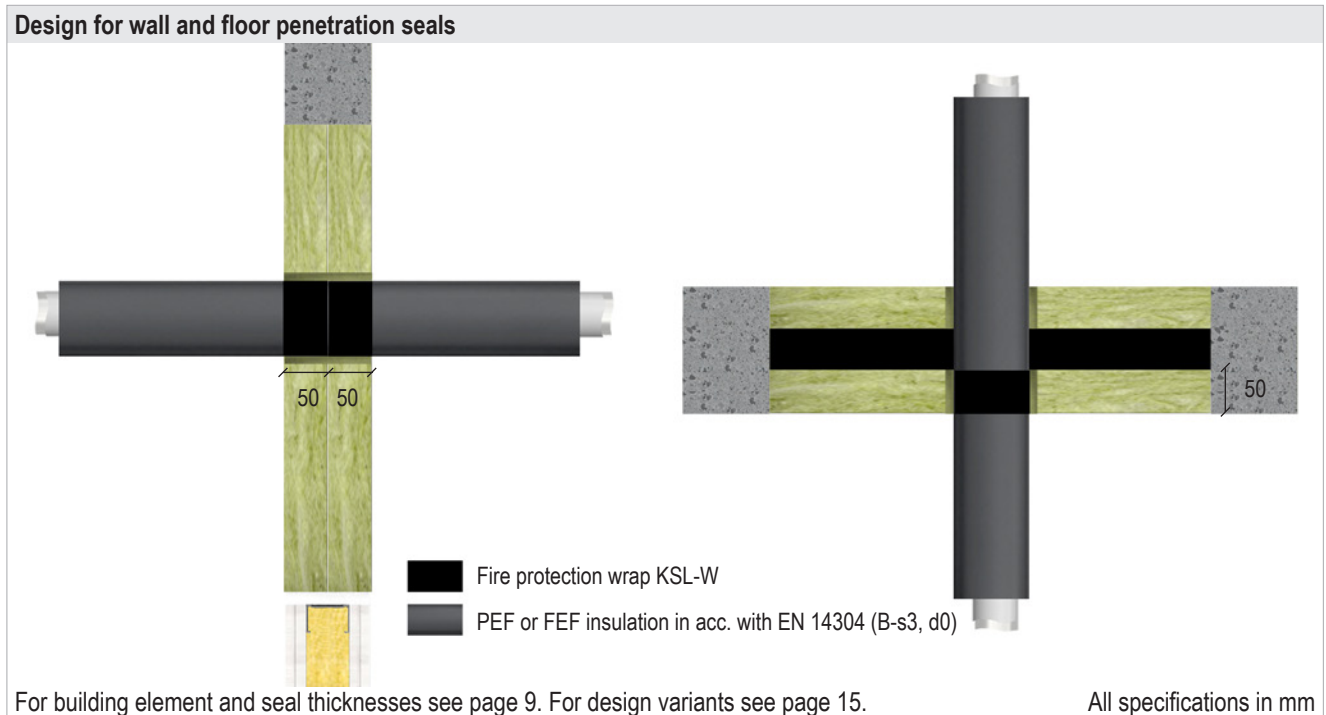
Floor				
Dimensions		FEF insulation	Fire protection wrap KSL-W	Fire resistance class
Pipe outer Ø [mm]		Thickness [mm]	Number of wraps × layers	
Geberit Silent-db20				
56.0		17.0	1 × 2 layers	EI 120 U/U
≤ 110.0		18.0	1 × 4 layers	EI 90 U/U
135.0		18.5	1 × 5 layers	EI 120 U/U
160.0		19.0	1 × 6 layers	EI 120 U/U
Geberit Silent-PP				
≤ 50.0		17.0	1 × 2 layers	EI 120 U/U
≤ 110.0		18.0	1 × 4 layers	EI 120 U/U
≤ 125.0		18.5	1 × 5 layers	EI 120 U/U
Geberit Silent-Pro				
≤ 50.0		17.0	1 × 2 layers	EI 120 U/U
≤ 110.0		18.0	1 × 4 layers	EI 120 U/U

System Flammotect 2 × 50 mm

Floor			
Dimensions	FEF insulation	Fire protection wrap KSL-W	Fire resistance class
Pipe outer Ø [mm]	Thickness [mm]	Number of wraps × layers	
Ostendorf Skolan dB			
≤ 58.0	17.0	1 × 2 layers	EI 120 U/U
≤ 135.0	18.5	1 × 5 layers	EI 120 U/U
Pipelife MASTER 3 PLUS			
≤ 50.0	17.0	1 × 2 layers	EI 120 U/U
≤ 110.0	18.0	1 × 4 layers	EI 120 U/U
POLO-KAL NG / POLO-KAL XS			
≤ 50.0	17.0	1 × 2 layers	EI 120 U/U
≤ 110.0	18.0	1 × 4 layers	EI 120 U/U
REHAU RAUPIANO PLUS			
≤ 50.0	17.0	1 × 2 layers	EI 120 U/U
REHAU RAUPIANO LIGHT			
≤ 50.0	17.0	1 × 2 layers	EI 120 U/U
≤ 110.0	18.0	1 × 4 layers	EI 120 U/U
≤ 125.0	18.5	1 × 4 layers	EI 120 U/U
≤ 160.0	19.0	1 × 6 layers	EI 90 U/U
REHAU RAUSILENTO			
≤ 50.0	17.0	1 × 2 layers	EI 120 U/U
≤ 110.0	18.0	1 × 4 layers	EI 120 U/U
≤ 125.0	18.5	1 × 4 layers	EI 120 U/U
≤ 160.0	19.0	1 × 6 layers	EI 90 U/U
CONEL DRAIN			
≤ 50.0	17.0	1 × 2 layers	EI 120 U/U
≤ 110.0	18.0	1 × 4 layers	EI 120 U/U
≤ 125.0	18.5	1 × 4 layers	EI 120 U/U
≤ 160.0	19.0	1 × 6 layers	EI 90 U/U
Wavin SiTech			
≤ 50.0	17.0	1 × 2 layers	EI 120 U/U
≤ 110.0	18.0	1 × 4 layers	EI 120 U/U
Wavin SiTech+			
≤ 50.0	17.0	1 × 2 layers	EI 120 U/U
≤ 110.0	18.0	1 × 4 layers	EI 120 U/U
Wavin AS+			
≤ 50.0	17.0	1 × 2 layers	EI 120 U/U
≤ 110.0	18.0	1 × 4 layers	EI 120 U/U
Hakan Silenta Premium			
≤ 58.0	17.0	1 × 2 layers	EI 120 U/U
≤ 110.0	18.0	1 × 4 layers	EI 120 U/U
≤ 135.0	18.5	1 × 5 layers	EI 120 U/U

System Flammotect 2 × 50 mm

8.6.3 Design with FEF and PEF insulation and fire protection wrap KSL-W



Installation with FEF insulation in acc. with EN 14304 (B-s3, d0)						
Pipe outer Ø [mm]	Pipe wall thickness [mm]	FEF insulation Thickness [mm]	Fire protection wrap KSL-W		Fire resistance class	
			Number of wraps × layers		Wall	Floor
		Wall	Floor			
Geberit Mepla						
16	2.25	8.0–32.0	2 × 1 layer	1 × 1 layer	EI 120 U/C	EI 120 U/C
20	2.50	8.0–32.0			EI 120 U/C	EI 120 U/C
26	3.00	8.5–35.0			EI 120 U/C	EI 120 U/C
32	3.00	9.0–35.0			EI 120 U/C	EI 120 U/C
40	3.50	9.0–35.0	2 × 2 layers	1 × 2 layers	EI 120 U/C	EI 120 U/C
50	4.00	9.0–35.0			EI 120 U/C	EI 120 U/C
63	4.50	9.0–39.0			EI 120 U/C	EI 120 U/C
75	4.70	9.5			EI 90 U/C	EI 90 U/C
		> 9.5 – 40.5			EI 120 U/C	EI 120 U/C
REHAU RAUTITAN stabil						
16	2.60	8.0–32.0	2 × 1 layer	1 × 1 layer	EI 120 U/C	EI 120 U/C
20	2.90	8.0–32.0			EI 120 U/C	EI 120 U/C
25	3.70	8.5–35.0			EI 120 U/C	EI 120 U/C
32	4.70	9.0–35.0	2 × 1 layer	1 × 2 layers	EI 120 U/C	EI 120 U/C
40	6.00	9.0–35.0	2 × 2 layers		EI 120 U/C	EI 120 U/C

System Flammotect 2 × 50 mm

Installation with FEF insulation in acc. with EN 14304 (B-s3, d0)						
Pipe outer Ø [mm]	Pipe wall thickness [mm]	FEF insulation	Fire protection wrap KSL-W		Fire resistance class	
		Thickness [mm]	Number of wraps × layers		Wall	Floor
			Wall	Floor		
KE KELIT KELOX						
16	2.00	8.0–32.0	2 × 1 layer	1 × 1 layer	EI 120 U/C	EI 120 U/C
18	2.00				EI 120 U/C	EI 120 U/C
20	2.25				EI 120 U/C	EI 120 U/C
25	2.50				EI 120 U/C	EI 120 U/C
32	3.00	9.5–35.0	2 × 2 layers	1 × 2 layers	EI 120 U/C	EI 120 U/C
40	4.00	9.5–35.0			EI 120 U/C	EI 120 U/C
50	4.50				EI 120 U/C	EI 120 U/C
63	6.00	9.0–39.0			EI 120 U/C	EI 120 U/C
75	7.50	9.0–40.5	EI 120 U/C	EI 120 U/C		
Henco						
20	2.0–3.0	8.0–32.0	2 × 1 layer	–	EI 120 U/C	–
32	3.0	8.0–32.0		–	EI 120 U/C	–
Installation with PEF insulation						
Pipe outer Ø [mm]	Pipe wall thickness [mm]	PEF insulation	Fire protection wrap KSL-W		Fire resistance class	
		Thickness [mm]	Number of wraps × layers		Wall	Floor
			Wall	Floor		
Geberit Mepla						
16	2.25	6.0–13.0	2 × 1 layer	1 × 1 layer	EI 120 U/C	EI 120 U/C
20	2.50	6.0–13.0			EI 120 U/C	EI 120 U/C
26	3.00	6.0–13.0			EI 120 U/C	EI 120 U/C
32	3.00	6.0–13.0			EI 120 U/C	EI 120 U/C
REHAU RAUTITAN stabil						
16	2.60	4.0–26.0	2 × 1 layer	1 × 1 layer	EI 120 U/C	EI 120 U/C
20	2.90	4.0–26.0			EI 120 U/C	EI 120 U/C
25	3.70	4.0–26.0			EI 120 U/C	–
		26.0			–	EI 120 U/C
32	4.70	4.0–26.0	2 × 1 layer	EI 120 U/C	–	
		26.0		–	EI 120 U/C	
KE KELIT KELOX						
18	2.00	4.0–13.0	2 × 1 layer	1 × 1 layer	EI 120 U/C	EI 120 U/C
20	2.25	4.0–13.0			EI 120 U/C	EI 120 U/C
25	2.50	4.0–13.0			EI 120 U/C	EI 120 U/C
32	3.00	4.0–13.0			EI 120 U/C	EI 120 U/C
Henco						
20	2.0–3.0	6.0–13.0	2 × 1 layer	1 × 1 layer	EI 120 U/C	EI 120 U/C
32	3.0	6.0–13.0		–	EI 120 U/C	–
		13.0		1 × 1 layer	–	EI 120 U/C