

Cables in wall and floor seals



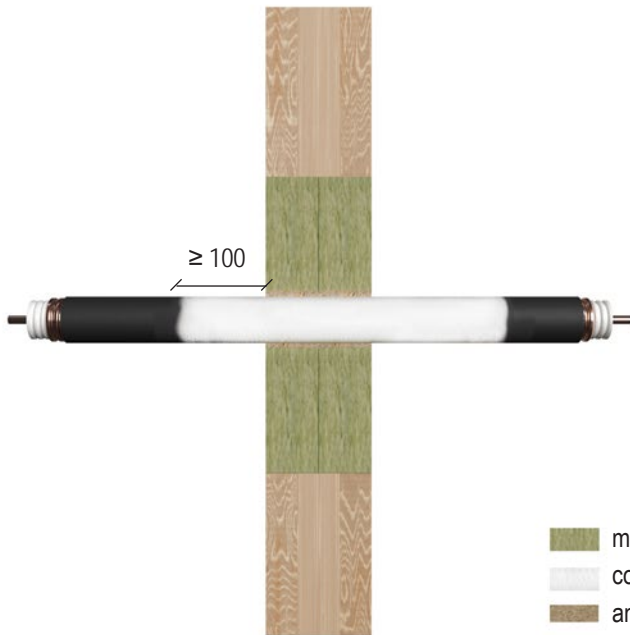
All specifications in mm

Wall		
Services	Coating on both sides with FLAMMOTECT-A	Fire resistance class*
Cables $\varnothing \leq 21$ mm	100 × 1.0 mm (length × dry film thickness)	EI 90
Cables $\varnothing \leq 50$ mm		EI 90
Cables $\varnothing \leq 80$ mm		EI 90
Cable bundles $\varnothing \leq 100$ mm with single cables $\varnothing \leq 21$ mm		EI 90

Floor		
Services	Coating on both sides with FLAMMOTECT-A	Fire resistance class*
Cables $\varnothing \leq 21$ mm	100 × 1.0 mm (length × dry film thickness)	EI 90
Cables $\varnothing \leq 50$ mm		150 × 1.0 mm (length × dry film thickness)
	Cables $\varnothing \leq 80$ mm	100 × 1.0 mm (length × dry film thickness)
		150 × 1.0 mm (length × dry film thickness)
Cable bundles $\varnothing \leq 100$ mm with single cables $\varnothing \leq 21$ mm	100 × 1.0 mm (length × dry film thickness)	EI 90

* Installing two mineral fibre boards with a thickness of 60 mm or three mineral fibre boards with a thickness of 50 mm raises the fire resistance class to EI 120.

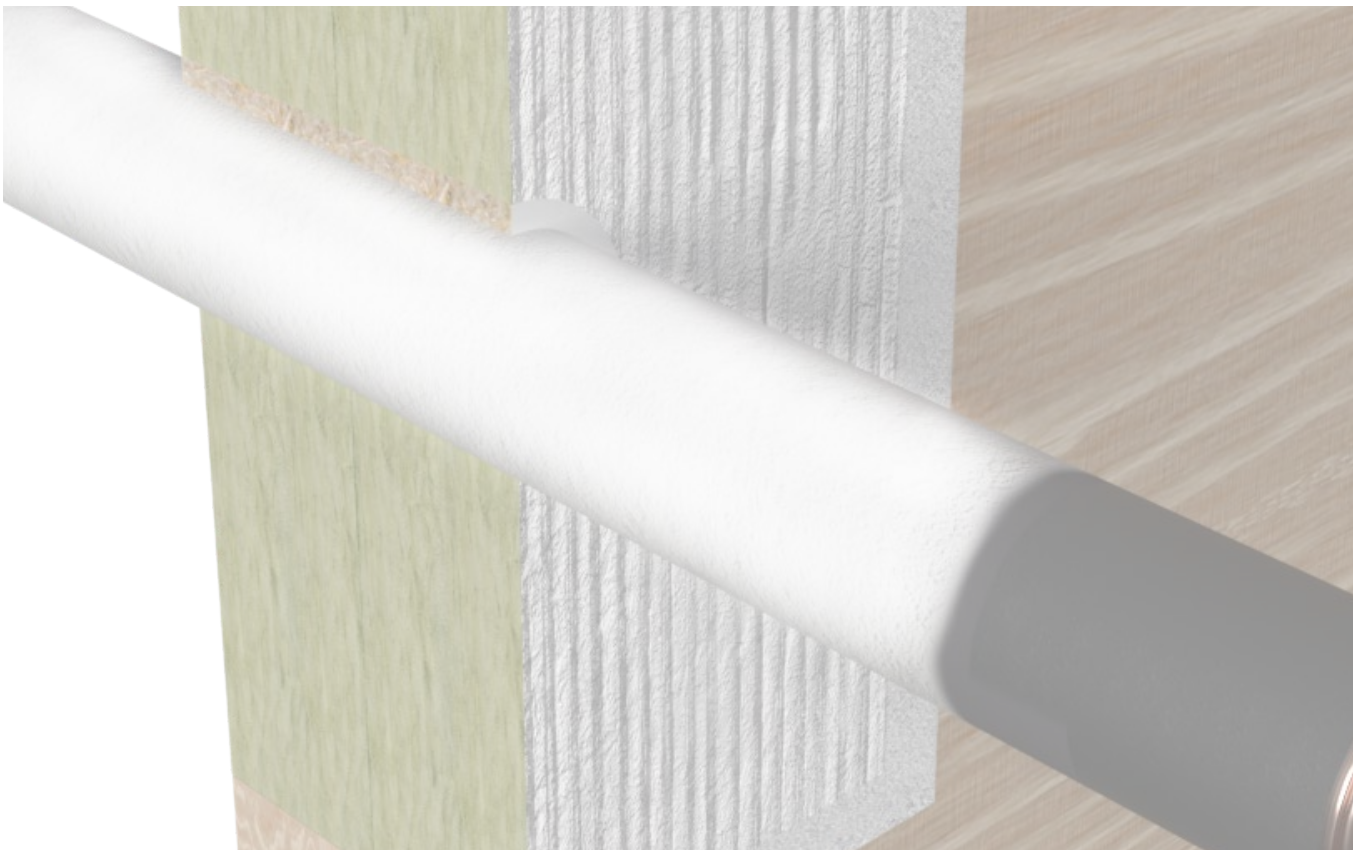
Wave guides and coaxial cables in wall seals



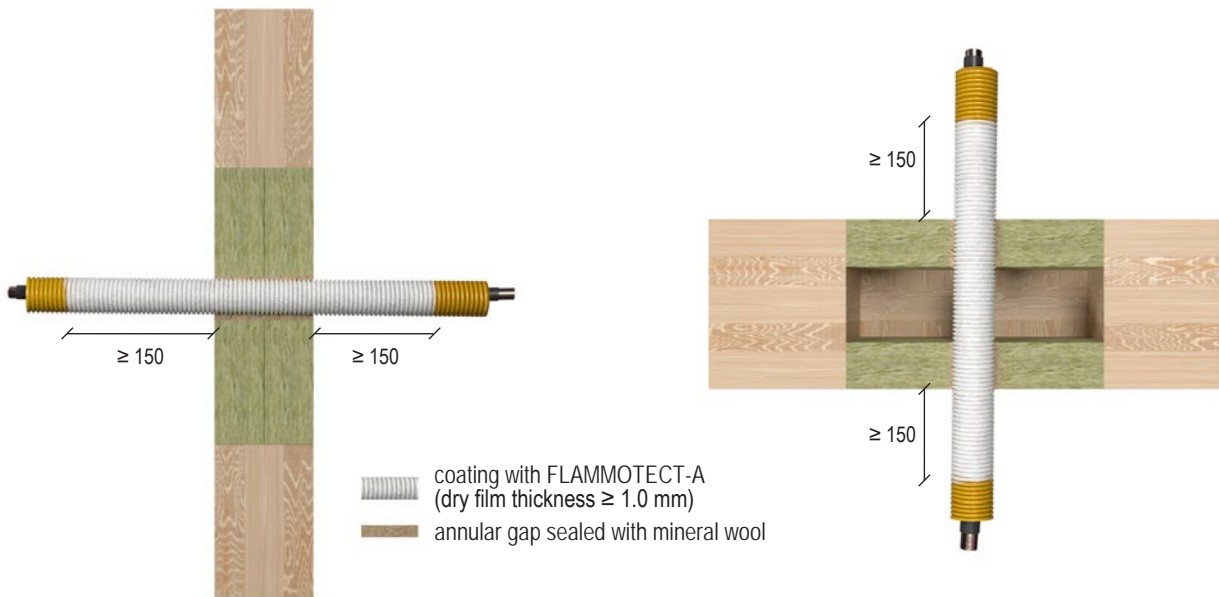
All specifications in mm

Wall		
Service	Coating on both sides with FLAMMOTECT-A	Fire resistance class**
CommScope HELIAX®, Ø ≤ 51.1	100 × 1.0 mm (length × dry film thickness)	EI 90 U/C
RFS CELLFLEX®, Ø ≤ 50.3		
RFS RADIAFLEX®, Ø ≤ 48.2		

* Installing two mineral fibre boards with a thickness of 60 mm or three mineral fibre boards with a thickness of 50 mm raises the fire resistance class to EI 120.



Electrical installation conduits made of plastic with fire protection coating in wall and floor seals



All specifications in mm

Wall and floor			
Services	Outer diameter [mm]	Coating on both sides with FLAMMOTECT-A	Fire resistance class
Electrical installation conduits made of plastic, single, with/without cables ≤ 21 mm	≤ 32	10×1.0 mm ⁵ (length \times dry film thickness)	EI 90 U/C