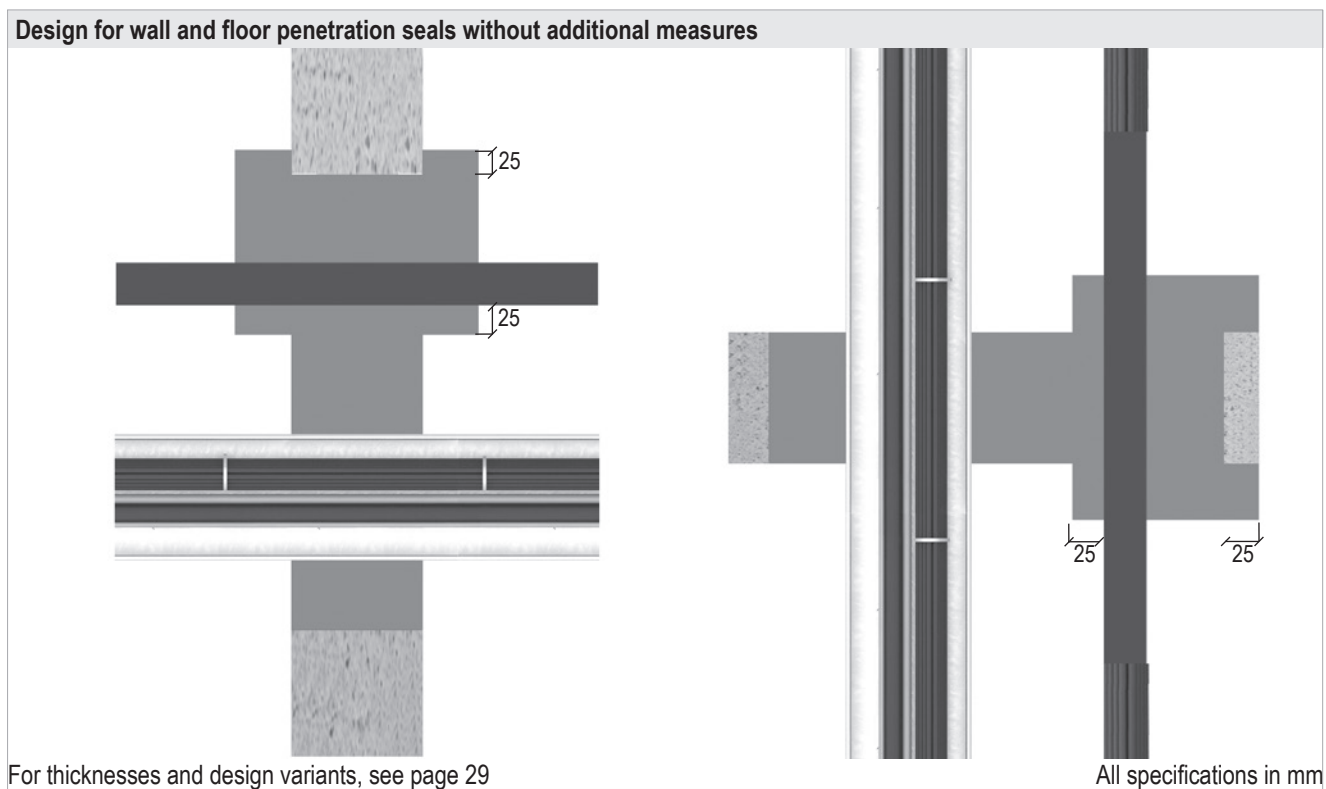


Novasit BM

8. Fire protection measures

8.1 Cables / cable bundles / cable trays

- Cables and cable bundles may be installed with or without cable trays.
- Cable bundles may be installed unopened in the seal. It is not necessary to fill the gussets if the bundles consist of parallel-running cables that are tightly packed, tied, stitched or welded together.
- The supporting structures for cable trays must be designed in such a way that the penetration seal will not be subjected to additional mechanical stress in case of fire.
- In case of cable support structures made of sheet steel or hollow aluminium profiles, the spars must be drilled and filled with the ablative filler FLAMMOTECT-A in the penetration area (necessary measures must be coordinated on site).



Service	Dimensions [mm]	Seal thickness [mm]	Fire resistance class	
			Wall	Floor
Cables	$\varnothing \leq 32$	150	EI 120	EI 120
	$\varnothing \leq 50$	240	EI 120	EI 90 / E 120
	$\varnothing \leq 80$		EI 90 / E 120	EI 90
Single-core non-sheathed cables	\varnothing wires ≤ 24	150	EI 120	EI 120
Cable bundles	$\varnothing \leq 60$		EI 120	EI 120
	$\varnothing \leq 100$		EI 90 / E 120	EI 60 / E 120
		240	EI 120	EI 120