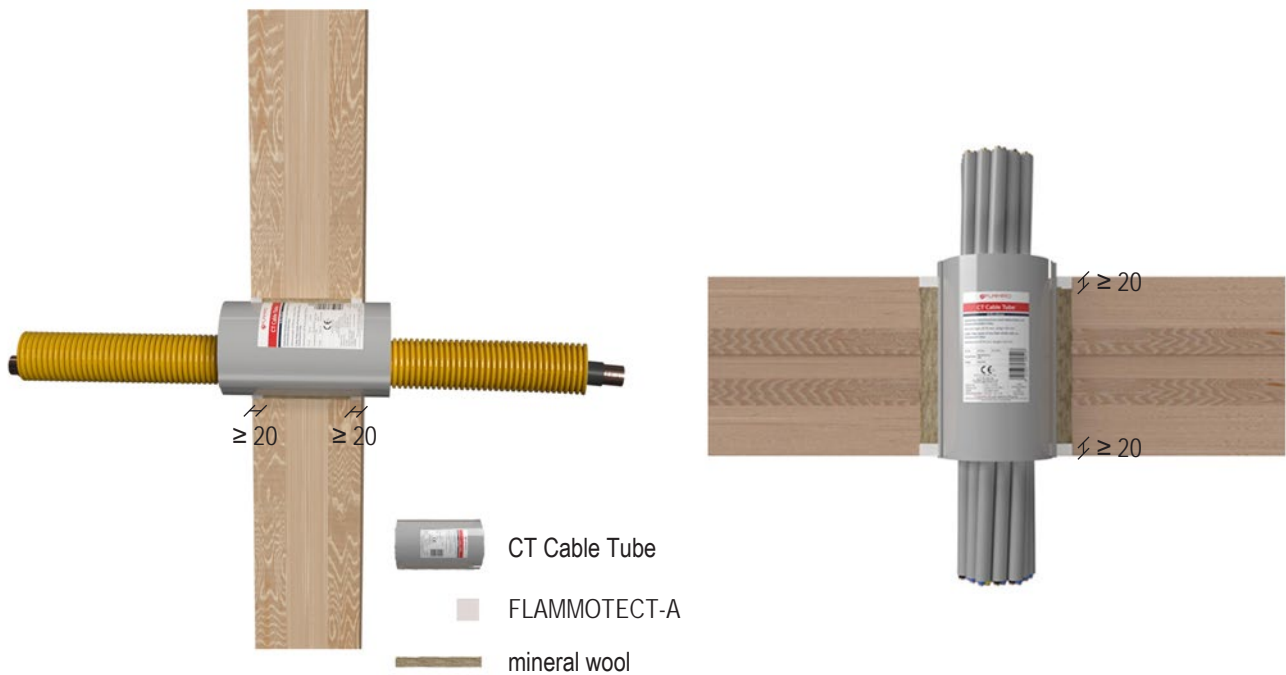


## System Cable Tube in wall and floor seals



All specifications in mm

### CT Cable Tube 150

Wall thickness  $\geq 100$  mm, CLT layers: 20/20/20/20/20

Floor thickness:  $\geq 100$  mm, CLT layers: 20/20/20/20/20

Services	Outer diameter [mm]	Fire resistance class	
		Wall	Floor
Cables	$\leq 21$	EI 45 / E 60	EI 45 / E 60
	$> 21 - \leq 50$	EI 45 / E 60	EI 45 / E 60
Cable bundles	$\leq 100$	–	EI 45 / E 60
Electrical installation conduits, with or without cables	$\leq 32$	EI 45 / E 60	EI 60
Electrical installation conduits, bundled, with or without cables	$3 \times \leq 32$		
HVAC split line combinations	2 copper pipes $\varnothing \leq 18$ mm, PVC-U pipe $\varnothing \leq 25$ mm, S = 4.5 mm, single cables $\varnothing \leq 14$ mm	EI 60	–

CT Cable Tube 150			
Wall thickness $\geq 100$ mm, CLT layers: 30/40/30 Floor thickness: $\geq 100$ mm, CLT layers: 40/20/20/20/40			
Services	Outer diameter [mm]	Fire resistance class	
		Wall	Floor
Cables	$\leq 21$	EI 30	EI 90
	$> 21 - \leq 50$	EI 30	-
Cable bundles	$\leq 100$	EI 90	EI 90
Electrical installation conduits, with or without cables	$\leq 32$	EI 90	EI 90
Electrical installation conduits, bundled, with or without cables	$3 \times \leq 32$		
HVAC split line combinations	2 copper pipes $\varnothing \leq 18$ mm, PVC-U pipe $\varnothing \leq 25$ mm, S = 4.5 mm, single cables $\varnothing \leq 14$ mm	EI 30	EI 90

CT Cable Tube 300			
Wall thickness $\geq 100$ mm, CLT layers: 20/20/20/20/20 Floor thickness: $\geq 100$ mm, CLT layers: 20/20/20/20/20			
Services	Outer diameter [mm]	Fire resistance class	
		Wall	Floor
Cables	$\leq 50$	EI 60	-
Electrical installation conduits, with or without cables	$\leq 32$	EI 45 / E 60	EI 60
Electrical installation conduits, bundled, with or without cables	$3 \times \leq 32$		

In walls Cable Tubes must be installed in the centre, in floors flush with the underside.