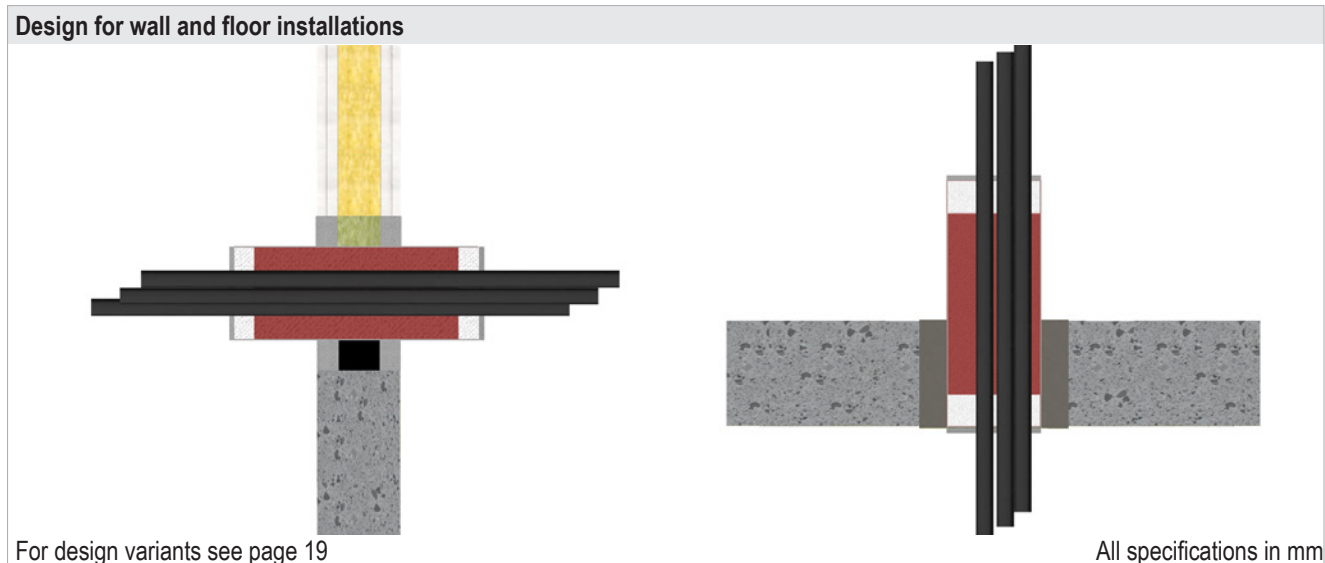


System Cable Tube

7. Fire protection measures

The fire protection measures described on the following pages also apply to subsequent installations.

7.1 Cables / cable bundles



CT Cable Tube 150	Measure	Fire resistance classes		
		Wall	Floor	Timber floor
Cables $\varnothing \leq 21$ mm	–	EI 90 / E 120	EI 120	EI 90
Cables $\varnothing \leq 50$ mm	only when 100% services are installed	–	EI 90 / E 90	–
Cable bundles $\varnothing \leq 100$ %, with cables $\varnothing \leq 14$ mm	–	EI 90 / E 120	EI 120	EI 90
Cable bundles $\varnothing \leq 100$ %, with cables $\varnothing \leq 21$ mm	–	EI 90 / E 120	EI 60 / E 90	EI 90
Cable bundles $\varnothing \leq 100$ %, with cables $\varnothing \leq 21$ mm	DG-CR 1.5, 1× 1 layer + 50 mm overlap, above and below floor	–	EI 120	–

CT Cable Tube 200	Measure	Fire resistance classes	
		Wall	Floor
Cables $\varnothing \leq 21$ mm	–	EI 120	EI 120
Cables $\varnothing \leq 50$ mm	only when 100% services are installed	–	EI 90 / E 90
Cable bundles $\varnothing \leq 100$ %, with cables $\varnothing \leq 14$ mm	–	EI 120	EI 120
Cable bundles $\varnothing \leq 100$ %, with cables $\varnothing \leq 21$ mm	–	EI 120	EI 60 / E 90
Cable bundles $\varnothing \leq 100$ %, with cables $\varnothing \leq 21$ mm	DG-CR 1.5, 1× 1 layer + 50 mm overlap, above and below floor	–	EI 120

System Cable Tube

CT Cable Tube 300	Measure	Fire resistance classes	
		Wall	Floor
Cables $\varnothing \leq 21$ mm	–	EI 120	EI 120
Cables $\varnothing \leq 50$ mm	–	EI 90 / E 120	EI 60 / E 120
Cables $\varnothing \leq 50$ mm	only when 100% services are installed	–	EI 90 / E 90
Cables $\varnothing \leq 50$ mm	lamella mat ≥ 100 mm \times ≥ 30 mm + DG-CR 1.5, 1 \times 1 layer, above floor	–	EI 120
Cables $\varnothing \leq 80$ mm	only in solid walls and floors	EI 90 / E 120	EI 60 / E 120
Cable bundles $\varnothing \leq 100$ %, with cables $\varnothing \leq 21$ mm	–	EI 120	EI 120

System Cable Tube

7.2 Wave guides

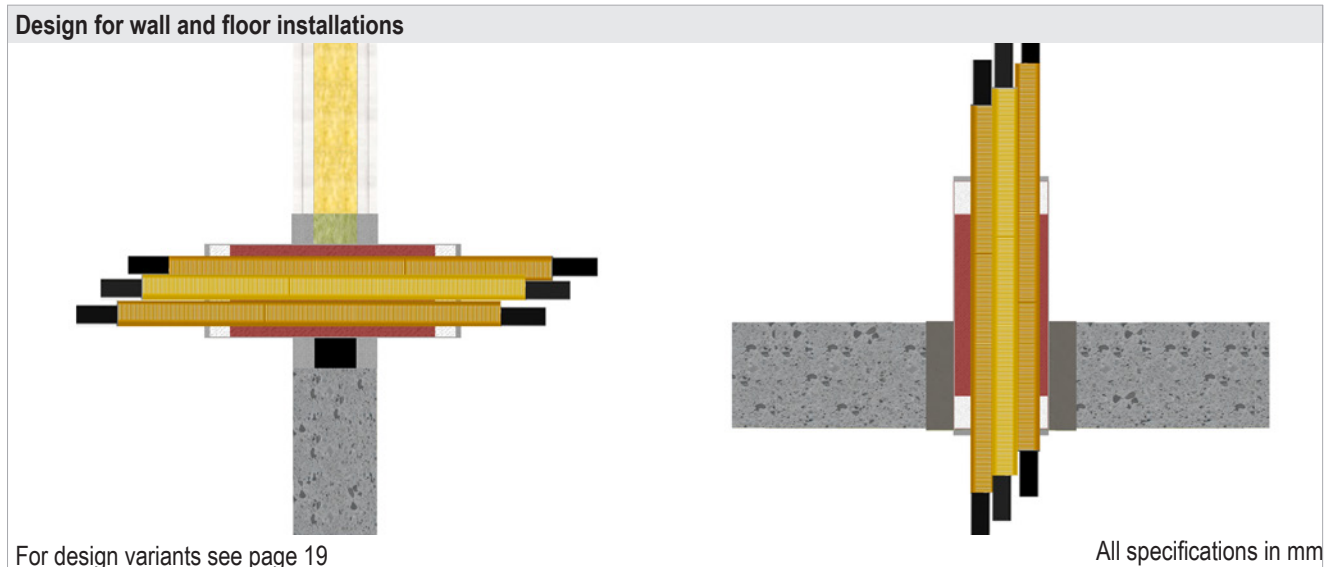
Design for wall installations

For design variants see page 19 All specifications in mm

CT Cable Tube 300	Measure	Fire resistance classes	
		Wall	Floor
CommScope HELIAX LDF (low density foam) Ø ≤ 16.002 mm	-	EI 120 U/C	-
CommScope 50Ω braided CNT Ø ≤ 15.0 mm	-	EI 120 U/C	-
CommScope HELIAX AVA Ø ≤ 28 mm	-	E 120 U/C / EI 90 U/C	-
CommScope HELIAX FSJ (super flexible) Ø ≤ 13.5 mm	-	E 120 U/C / EI 90 U/C	-
RFS RADIAFLEX RLK Ø ≤ 28.5 mm	-	EI 120 U/C	-
RFS CELLFLEX LCF Ø ≤ 27, 8 mm	-	EI 120 U/C	-

System Cable Tube

7.3 Electrical installation conduits, single or bundled



CT Cable Tube 150	Measure	Fire resistance classes			
		Wall	Timber wall	Floor	Timber floor
EIC single $\varnothing \leq 40$ mm, with/without cables $\varnothing \leq 21$ mm	–	EI 90 U/U E 120 U/U		–	
EIC bundles $\varnothing \leq 3 \times 32$ mm, with/without cables	max. 3 pcs.	–	EI 90 U/U	EI 90 U/U	EI 90
EIC bundles, with/without cables, $\varnothing \leq 90$ mm (consisting of EIC $\varnothing \leq 40$ mm, with/without cables $\varnothing \leq 21$ mm)	–	EI 90 U/U E 120 U/U		–	

CT Cable Tube 200	Measure	Fire resistance classes	
		Wall	Floor
EIC single $\varnothing \leq 40$ mm, with/without cables $\varnothing \leq 21$ mm	–	EI 120 U/U	–
EIC single $\varnothing \leq 32$ mm, with/without cables $\varnothing \leq 14$ mm	max. 3 pcs.	–	EI 90 U/U
EIC bundles, with/without cables, $\varnothing \leq 90$ mm (consisting of EIC $\varnothing \leq 40$ mm, with/without cables $\varnothing \leq 21$ mm)	–	EI 120 U/U	–
EIC bundles $\varnothing \leq 100$ % (consisting of EIC $\varnothing \leq 32$ mm, with/without cables $\varnothing \leq 21$ mm)	–	EI 120 U/U	–

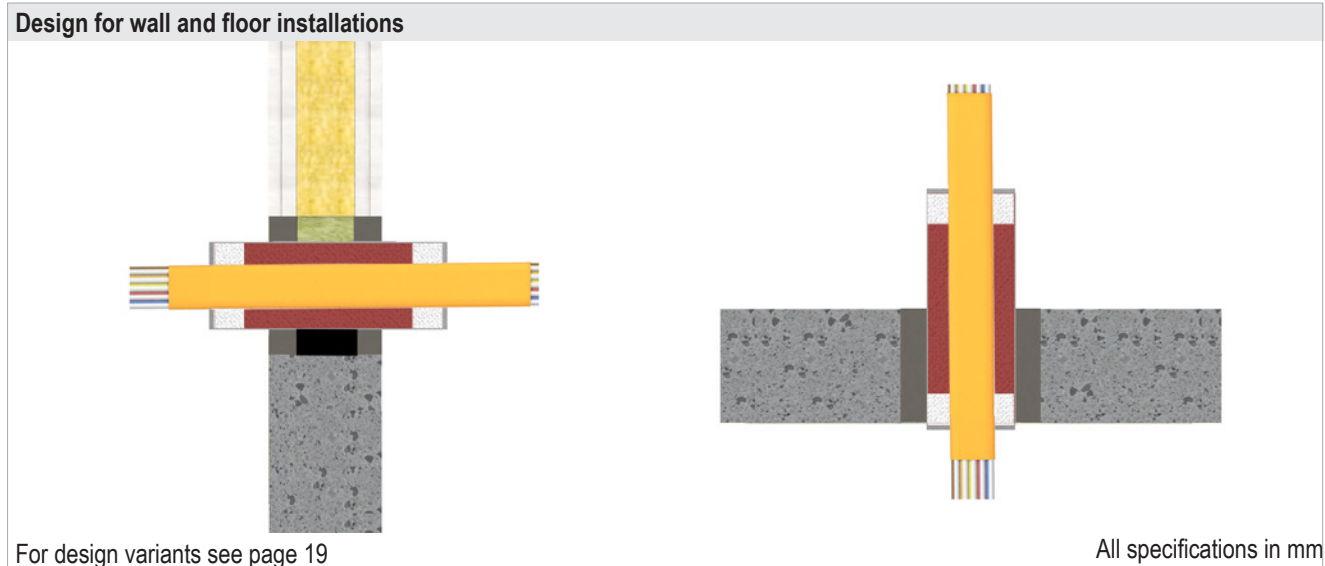
System Cable Tube

CT Cable Tube 300	Measure	Fire resistance classes	
		Wall	Floor
EIC $\varnothing \leq 40$ mm / $\varnothing \leq 63$ mm, with/without cables $\varnothing \leq 21$ mm	$\varnothing \leq 40$ mm wall / $\varnothing \leq 63$ mm floor	EI 120 U/U	EI 120 U/U
EIC bundles, with/without cables (consisting of EIC $\varnothing \leq 40$ mm) $\varnothing \leq 90$ mm	–	EI 120 U/U	–
EIC bundles $\varnothing \leq 100$ % with EIC $\varnothing \leq 32$ mm, with/without cables $\varnothing \leq 21$ mm	wall ≥ 200 mm*	–	EI 120 U/U

* Instead of CT 300, two CT 150s connected with fabric tape can be used.

System Cable Tube

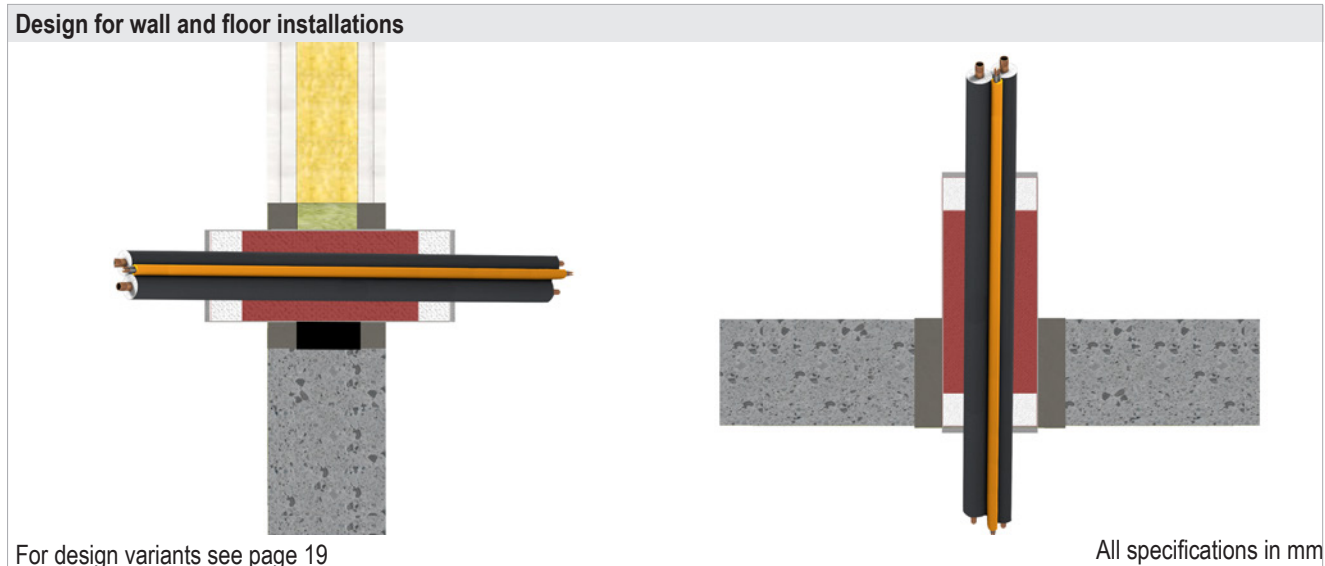
7.4 speedpipes



CT Cable Tube 150	Measure	Fire resistance classes	
		Wall	Floor
max. 24 pcs. pipe outer $\varnothing \leq 7$ max. 7 pcs. pipe outer $\varnothing \leq 10$ max. 5 pcs. pipe outer $\varnothing \leq 12$ bundle $\varnothing \leq 100\%$	-	EI 120 U/U	EI 120 U/U
CT Cable Tube 200	Measure	Fire resistance classes	
		Wall	Floor
max. 24 pcs. pipe outer $\varnothing \leq 7$ max. 7 pcs. pipe outer $\varnothing \leq 10$ max. 5 pcs. pipe outer $\varnothing \leq 12$ bundle $\varnothing \leq 100\%$	-	EI 120 U/U	EI 120 U/U
CT Cable Tube 300	Measure	Fire resistance classes	
		Wall	Floor
max. 24 pcs. pipe outer $\varnothing \leq 7$ max. 7 pcs. pipe outer $\varnothing \leq 10$ max. 5 pcs. pipe outer $\varnothing \leq 12$ bundle $\varnothing \leq 100\%$	-	EI 120 U/U	EI 120 U/U

System Cable Tube

7.5 HVAC split line combinations



CT Cable Tube 150	Measure	Fire resistance classes		
		Wall	Floor	Timber floor
Pipe 1 / pipe 2 Pipe Ø 6–10 mm / 10–18 mm + PEF pipe insulation, thickness 9 mm + PE-100 outer Ø ≤ 25 mm, s 1.5 mm (U/U) + max. 3 cables Ø ≤ 14 mm	–	EI 90 U/U	EI 90 U/U	–
Copper pipe Ø 2 × 18 mm (C/U) + PVC-U pipe outer Ø ≤ 25 mm, s 4,5 mm (U/U) + cables Ø ≤ 14 mm	–	–	–	EI 90
Pipe 1 / pipe 2 outer Ø 6–22 mm / 6–22 mm + PEF pipe insulation, thickness 9 mm + PE-100 outer Ø ≤ 25 mm, s 1.5 mm (U/U) + max. 3 cables Ø ≤ 14 mm	lamella mat ≥ 250 mm × ≥ 30 mm above floor	–	EI 120 U/U	–

CT Cable Tube 200	Measure	Fire resistance classes	
		Wall	Floor
Pipe 1 / pipe 2 Pipe Ø 6–10 mm / 10–18 mm + PEF pipe insulation, thickness 9 mm + PE-100 outer Ø ≤ 25 mm, s 1.5 mm (U/U) + max. 3 cables Ø ≤ 14 mm	–	EI 90 U/U	EI 90 U/U
Pipe 1 / pipe 2 outer Ø 6–22 mm / 6–22 mm + PEF pipe insulation, thickness 9 mm + PE-100 outer Ø ≤ 25 mm, s 1.5 mm (U/U) + max. 3 cables Ø ≤ 14 mm	lamella mat ≥ 250 mm × ≥ 30 mm above floor	–	EI 120 U/U

System Cable Tube

CT Cable Tube 300	Measure	Fire resistance classes	
		Wall	Floor
Pipe 1 / pipe 2 Pipe Ø 6–10 mm / 10–18 mm + PEF pipe insulation, thickness 9 mm + PE-100 outer Ø ≤ 25 mm, s 1.5 mm (U/U) + max. 3 cables Ø ≤ 14 mm	–	EI 90 U/U	EI 90 U/U
Pipe 1 / pipe 2 Outer Ø 6–22 mm / 6–22 mm + PEF pipe insulation, thickness 9 mm + PE-100 outer Ø ≤ 25 mm, s 1.5 mm (U/U) + max. 3 cables Ø ≤ 14 mm	lamella mat ≥ 250 mm × ≥ 30 mm above floor	–	EI 120 U/U