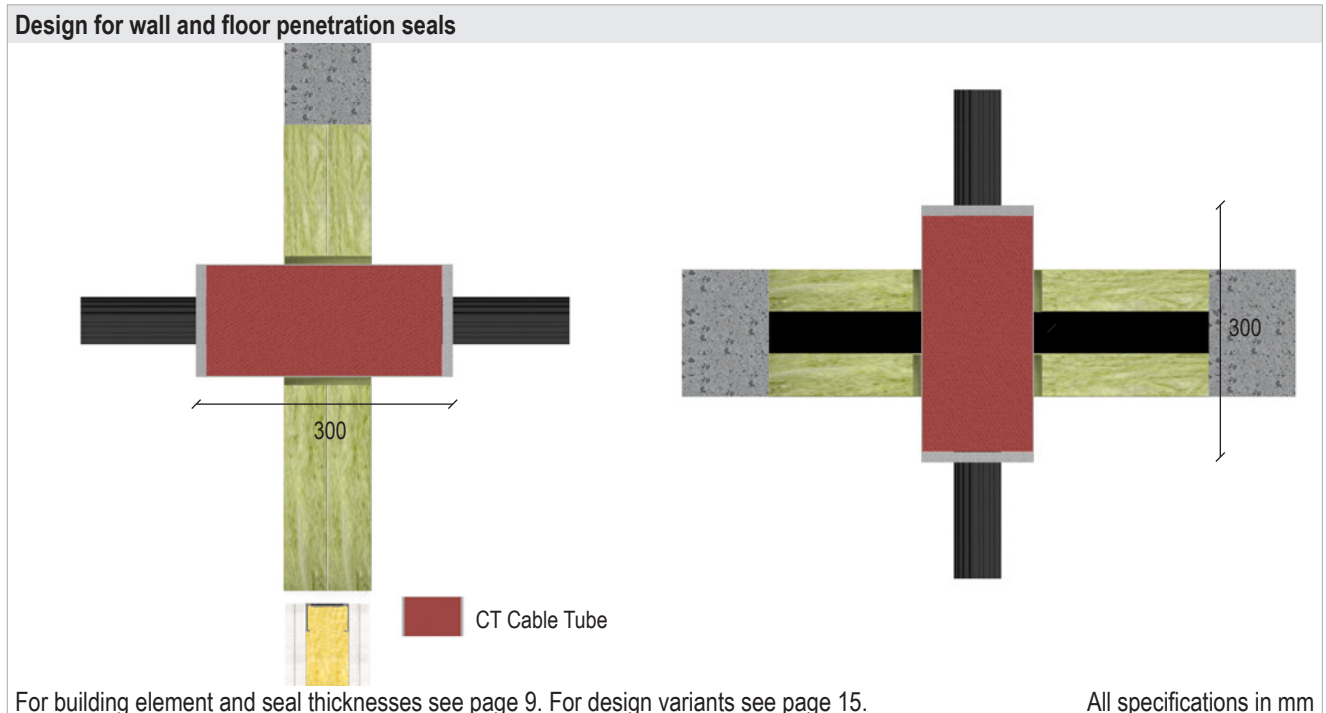


System Flammotect 2 × 50 mm

8.1.1 Design with Cable Tube

The Cable Tube must be positioned in the centre of the seal.



Service	Diameter [mm]	Length of Cable Tube [mm]	Fire resistance class	
Cables	≤ 21	300	EI 90	EI 120
Cable bundles with cables $\varnothing \leq 21$ mm	≤ 100		EI 90	EI 120