

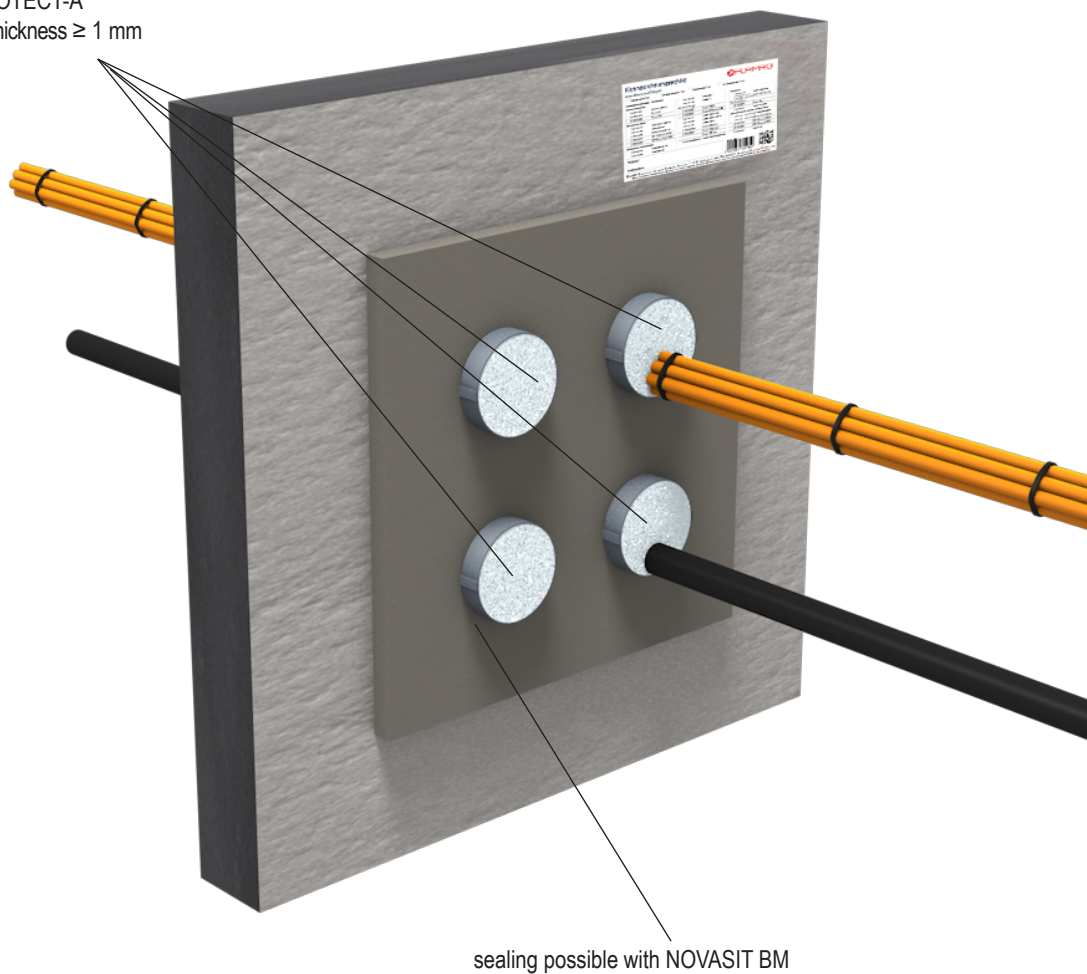
## Novasit BM

### 8.10 Subsequent installations with CT Cable Tube

- Depending on the installed services, Cable Tubes with lengths of 150, 200 and 300 mm may be used.
- Cables, cable bundles and electrical installation conduits may be installed directly adjacent to each other and to the inner Cable Tube wall.
- The Cable Tube may be used to seal openings without installations (blank seals).
- For detailed installation steps, please consult the Cable Tube installation instructions.
- For subsequent installations, the sealed soft foam plugs must be removed from the Cable Tube
- The remaining openings between the services and the Cable Tube as well as between the services themselves must be filled completely with the 40 mm soft foam plugs. Afterwards the plugs must be sealed with the ablative filler FLAMMOTECT-A.
- In floors with a thickness of  $\geq 200$  mm, two 150 mm Cables Tubes can be combined (using duct tape) to a 300 mm Cable Tube.

#### Measures for subsequent installations

sealed with  
FLAMMOTECT-A  
dry film thickness  $\geq 1$  mm



For thicknesses and design variants, see page 29

All specifications in mm